

**Product Name: ALS2CR13 Rabbit Polyclonal Antibody****Catalog #: APRab06812**

For research use only.

**Summary**

<b>Description</b>	Rabbit polyclonal Antibody
<b>Host</b>	Rabbit
<b>Application</b>	WB,ELISA
<b>Reactivity</b>	Human,Mouse
<b>Conjugation</b>	Unconjugated
<b>Modification</b>	Unmodified
<b>Isotype</b>	IgG
<b>Clonality</b>	Polyclonal
<b>Form</b>	Liquid
<b>Concentration</b>	1mg/ml
<b>Storage</b>	Aliquot and store at -20°C (valid for 12 months). Avoid freeze/thaw cycles.
<b>Shipping</b>	Ice bags
<b>Buffer</b>	Liquid in PBS containing 50% glycerol, 0.5% protective protein and 0.02% New type preservative N.
<b>Purification</b>	Affinity purification

**Application**

<b>Dilution Ratio</b>	WB 1:500-1:2000,ELISA 1:5000-1:10000
<b>Molecular Weight</b>	60kDa

**Antigen Information**

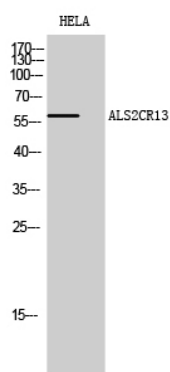
<b>Gene Name</b>	FAM117B
<b>Alternative Names</b>	FAM117B; ALS2CR13; Protein FAM117B; Amyotrophic lateral sclerosis 2 chromosomal region candidate gene 13 protein
<b>Gene ID</b>	150864.0
<b>SwissProt ID</b>	Q6P1L5
<b>Immunogen</b>	The antiserum was produced against synthesized peptide derived from human ALS2CR13. AA range:411-460

**Background**

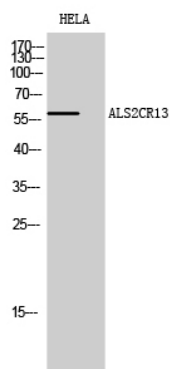
miscellaneous:ALS2CR13 is mapped in the genomic region covering the complete candidate region for Amyotrophic lateral sclerosis 2 (ALS2),,sequence caution:Contaminating sequence. Sequence of unknown origin in the N-terminal part.,miscellaneous:ALS2CR13 is mapped in the genomic region covering the complete candidate region for Amyotrophic lateral sclerosis 2 (ALS2),,sequence caution:Contaminating sequence. Sequence of unknown origin in the N-terminal part.,

## Research Area

## Image Data



Western Blot analysis of HELA cells using ALS2CR13 Polyclonal Antibody diluted at 1 : 500



Western Blot analysis of HELA cells using ALS2CR13 Polyclonal Antibody diluted at 1 : 500