

Product Name: ALS2CR11 Rabbit Polyclonal Antibody**Catalog #: APRab06811**

For research use only.

Summary

Description	Rabbit polyclonal Antibody
Host	Rabbit
Application	WB,ELISA
Reactivity	Human,Rat,Mouse
Conjugation	Unconjugated
Modification	Unmodified
Isotype	IgG
Clonality	Polyclonal
Form	Liquid
Concentration	1mg/ml
Storage	Aliquot and store at -20°C (valid for 12 months). Avoid freeze/thaw cycles.
Shipping	Ice bags
Buffer	Liquid in PBS containing 50% glycerol, 0.5% protective protein and 0.02% New type preservative N.
Purification	Affinity purification

Application

Dilution Ratio	WB 1:500-1:2000,ELISA 1:20000-1:40000
Molecular Weight	72kDa

Antigen Information

Gene Name	ALS2CR11
Alternative Names	ALS2CR11; Amyotrophic lateral sclerosis 2 chromosomal region candidate gene 11 protein
Gene ID	151254.0
SwissProt ID	Q53TS8
Immunogen	The antiserum was produced against synthesized peptide derived from human ALS2CR11. AA range:491-540

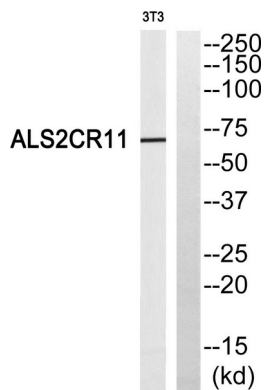
Background

An autosomal recessive form of juvenile amyotrophic lateral sclerosis was originally mapped to a region of chromosome 2 that

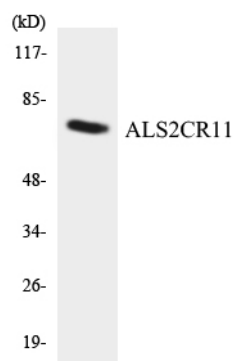
includes this gene. The encoded protein contains a calcium-dependent membrane targeting C2 domain. This domain is often found in proteins that are involved in membrane trafficking and signal transduction. [provided by RefSeq, Jun 2016],

Research Area

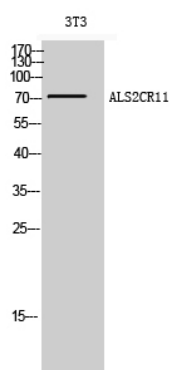
Image Data



Western blot analysis of ALS2CR11 Antibody. The lane on the right is blocked with the ALS2CR11 peptide.



Western blot analysis of the lysates from COLO205 cells using ALS2CR11 antibody.



Western Blot analysis of 3T3 cells using ALS2CR11 Polyclonal Antibody