
Product Name: AKR1CL1 Rabbit Polyclonal Antibody**Catalog #: APRab06735**

For research use only.

Summary

Description	Rabbit polyclonal Antibody
Host	Rabbit
Application	ICC/IF,ELISA
Reactivity	Human,Rat,Mouse
Conjugation	Unconjugated
Modification	Unmodified
Isotype	IgG
Clonality	Polyclonal
Form	Liquid
Concentration	1mg/ml
Storage	Aliquot and store at -20°C (valid for 12 months). Avoid freeze/thaw cycles.
Shipping	Ice bags
Buffer	Liquid in PBS containing 50% glycerol, 0.5% protective protein and 0.02% New type preservative N.
Purification	Affinity purification

Application

Dilution Ratio	ICC/IF 1:200-1:1000,ELISA 1:20000-1:40000
Molecular Weight	37kDa

Antigen Information

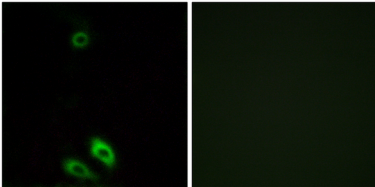
Gene Name	AKR1CL1
Alternative Names	AKR1CL1; Aldo-keto reductase family 1 member C-like protein 1
Gene ID	340811.0
SwissProt ID	Q5T2L2
Immunogen	The antiserum was produced against synthesized peptide derived from human AKR1CL1. AA range:80-129

Background

similarity:Belongs to the aldo/keto reductase family.,similarity:Belongs to the aldo/keto reductase family.,

Research Area

Image Data



Immunofluorescence analysis of A549 cells, using AKR1CL1 Antibody. The picture on the right is blocked with the synthesized peptide.