

Product Name: AKAP 2 Rabbit Polyclonal Antibody**Catalog #: APRab06722**

For research use only.

Summary

Description	Rabbit polyclonal Antibody
Host	Rabbit
Application	WB,ELISA
Reactivity	Human,Rat,Mouse
Conjugation	Unconjugated
Modification	Unmodified
Isotype	IgG
Clonality	Polyclonal
Form	Liquid
Concentration	1mg/ml
Storage	Aliquot and store at -20°C (valid for 12 months). Avoid freeze/thaw cycles.
Shipping	Ice bags
Buffer	Liquid in PBS containing 50% glycerol, 0.5% protective protein and 0.02% New type preservative N.
Purification	Affinity purification

Application

Dilution Ratio	WB 1:500-1:2000,ELISA 1:10000-1:20000
Molecular Weight	96kDa

Antigen Information

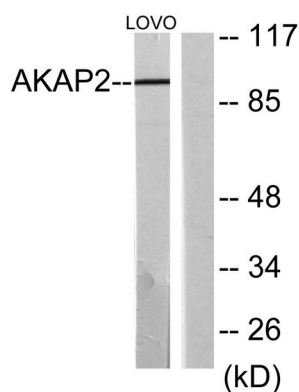
Gene Name	AKAP2
Alternative Names	AKAP2; KIAA0920; PRKA2; A-kinase anchor protein 2; AKAP-2; AKAP-KL; Protein kinase A-anchoring protein 2; PRKA2
Gene ID	445815/11217
SwissProt ID	Q9Y2D5
Immunogen	The antiserum was produced against synthesized peptide derived from human AKAP2. AA range:71-120

Background

The protein encoded by this gene binds to the regulatory subunit of protein kinase A and is found associated with the actin cytoskeleton. The encoded protein mediates signals carried by cAMP and may be involved in creating polarity in certain signaling processes. Three transcript variants encoding different isoforms have been found for this gene. [provided by RefSeq, Mar 2011],caution:It is uncertain whether Met-1 or Met-3 is the initiator.,function:Binds to regulatory subunit (RII) of protein kinase A. May be involved in establishing polarity in signaling systems or in integrating PKA-RII isoforms with downstream effectors to capture, amplify and focus diffuse, trans-cellular signals carried by cAMP.,miscellaneous:Can be differentially expressed as a natural AKAP2-PALM2 chimeric protein.,similarity:Belongs to the paralemmin family.,tissue specificity:Expressed in infantile heart and muscle, and fibroblasts.,

Research Area

Image Data



Western blot analysis of lysates from LOVO cells, using AKAP2 Antibody. The lane on the right is blocked with the synthesized peptide.