

---

**Product Name: AKAP 149 Rabbit Polyclonal Antibody****Catalog #: APRab06721**

For research use only.

**Summary**

<b>Description</b>	Rabbit polyclonal Antibody
<b>Host</b>	Rabbit
<b>Application</b>	WB,IHC,ICC/IF,ELISA
<b>Reactivity</b>	Human,Rat,Mouse
<b>Conjugation</b>	Unconjugated
<b>Modification</b>	Unmodified
<b>Isotype</b>	IgG
<b>Clonality</b>	Polyclonal
<b>Form</b>	Liquid
<b>Concentration</b>	1mg/ml
<b>Storage</b>	Aliquot and store at -20°C (valid for 12 months). Avoid freeze/thaw cycles.
<b>Shipping</b>	Ice bags
<b>Buffer</b>	Liquid in PBS containing 50% glycerol, 0.5% protective protein and 0.02% New type preservative N.
<b>Purification</b>	Affinity purification

**Application**

<b>Dilution Ratio</b>	WB 1:500-1:2000,IHC 1:100-1:300,ICC/IF 1:200-1:1000,ELISA 1:5000-1:10000
<b>Molecular Weight</b>	90kDa

**Antigen Information**

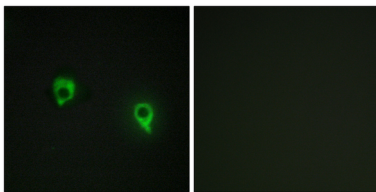
<b>Gene Name</b>	AKAP1 AKAP1; AKAP149; PRKA1; A-kinase anchor protein 1; mitochondrial; A-kinase anchor protein
<b>Alternative Names</b>	149 kDa; AKAP 149; Dual specificity A-kinase-anchoring protein 1; D-AKAP-1; Protein kinase A-anchoring protein 1; PRKA1; Spermatid A-kinase anchor prot
<b>Gene ID</b>	8165.0
<b>SwissProt ID</b>	Q92667
<b>Immunogen</b>	The antiserum was produced against synthesized peptide derived from human AKAP1. AA range:281-330

## Background

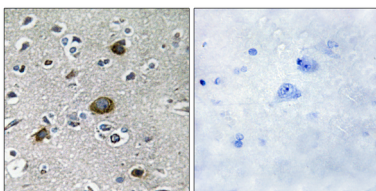
The A-kinase anchor proteins (AKAPs) are a group of structurally diverse proteins, which have the common function of binding to the regulatory subunit of protein kinase A (PKA) and confining the holoenzyme to discrete locations within the cell. This gene encodes a member of the AKAP family. The encoded protein binds to type I and type II regulatory subunits of PKA and anchors them to the mitochondrion. This protein is speculated to be involved in the cAMP-dependent signal transduction pathway and in directing RNA to a specific cellular compartment. [provided by RefSeq, Jul 2008],domain:RII-alpha binding site, predicted to form an amphipathic helix, could participate in protein-protein interactions with a complementary surface on the R-subunit dimer.,function: Binds to type I and II regulatory subunits of protein kinase A and anchors them to the cytoplasmic face of the mitochondrial outer membrane.,similarity: Contains 1 KH domain.,similarity: Contains 1 Tudor domain.,tissue specificity: AKAP149 is highly expressed in prostate and small intestine whereas S-AKAP84 is expressed in kidney, pancreas, liver, lung and brain. AKAP149 is also expressed in colon carcinoma.,

## Research Area

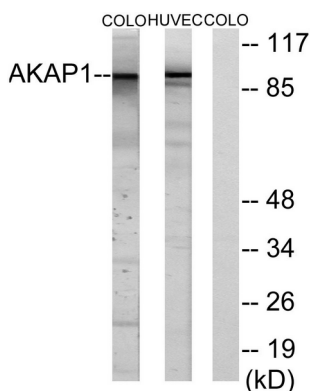
### Image Data



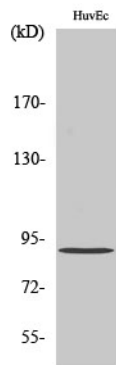
Immunofluorescence analysis of COS7 cells, using AKAP1 Antibody. The picture on the right is blocked with the synthesized peptide.



Immunohistochemistry analysis of paraffin-embedded human brain tissue, using AKAP1 Antibody. The picture on the right is blocked with the synthesized peptide.



Western blot analysis of lysates from HUVEC and COLO cells, using AKAP1 Antibody. The lane on the right is blocked with the synthesized peptide.



Western Blot analysis of various cells using AKAP 149 Polyclonal Antibody diluted at 1: 2000