
Product Name: AIG-1 Rabbit Polyclonal Antibody**Catalog #: APRab06702**

For research use only.

Summary

Description	Rabbit polyclonal Antibody
Host	Rabbit
Application	WB,ELISA
Reactivity	Human,Rat,Mouse
Conjugation	Unconjugated
Modification	Unmodified
Isotype	IgG
Clonality	Polyclonal
Form	Liquid
Concentration	1mg/ml
Storage	Aliquot and store at -20°C (valid for 12 months). Avoid freeze/thaw cycles.
Shipping	Ice bags
Buffer	Liquid in PBS containing 50% glycerol, 0.5% protective protein and 0.02% New type preservative N.
Purification	Affinity purification

Application

Dilution Ratio	WB 1:500-1:2000,ELISA 1:20000-1:40000
Molecular Weight	32kDa

Antigen Information

Gene Name	AIG1
Alternative Names	AIG1; CGI-103; Androgen-induced gene 1 protein; AIG-1
Gene ID	51390.0
SwissProt ID	Q9NVV5
Immunogen	The antiserum was produced against synthesized peptide derived from human AIG1. AA range:196-245

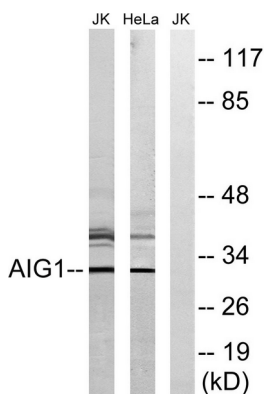
Background

function:May play a role in androgen-regulated growth of hair follicles.,induction:By dihydrotestosterone

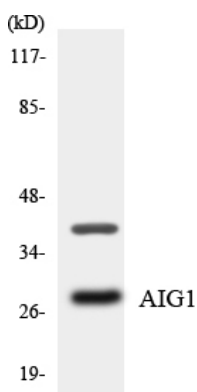
(DHT),,similarity:Belongs to the AIG1 family.,tissue specificity:Highly expressed in heart, ovary, testis, liver, and kidney, at lower levels in spleen, prostate, brain, skeletal muscle, pancreas, small intestine and colon, and undetected in peripheral blood leukocytes, thymus, lung and placenta. AIG1 expression is higher in hair follicles from males than from females.,function:May play a role in androgen-regulated growth of hair follicles.,induction:By dihydrotestosterone (DHT),,similarity:Belongs to the AIG1 family.,tissue specificity:Highly expressed in heart, ovary, testis, liver, and kidney, at lower levels in spleen, prostate, brain, skeletal muscle, pancreas, small intestine and colon, and undetected in peripheral blood leukocytes, thymus, lung and placenta. AIG1 expression is higher in hair follicles from males than from females.,

Research Area

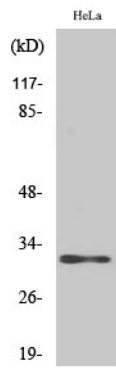
Image Data



Western blot analysis of lysates from HeLa and Jurkat cells, using AIG1 Antibody. The lane on the right is blocked with the synthesized peptide.



Western blot analysis of the lysates from HT-29 cells using AIG1 antibody.



Western Blot analysis of various cells using AIG-1 Polyclonal Antibody