
Product Name: AIFL Rabbit Polyclonal Antibody**Catalog #: APRab06700**

For research use only.

Summary

Description	Rabbit polyclonal Antibody
Host	Rabbit
Application	WB,IHC,ICC/IF,ELISA
Reactivity	Human,Mouse
Conjugation	Unconjugated
Modification	Unmodified
Isotype	IgG
Clonality	Polyclonal
Form	Liquid
Concentration	1mg/ml
Storage	Aliquot and store at -20°C (valid for 12 months). Avoid freeze/thaw cycles.
Shipping	Ice bags
Buffer	Liquid in PBS containing 50% glycerol, 0.5% protective protein and 0.02% New type preservative N.
Purification	Affinity purification

Application

Dilution Ratio	WB 1:500-1:2000,IHC 1:100-1:300,ICC/IF 1:200-1:1000,ELISA 1:20000-1:40000
Molecular Weight	67kDa

Antigen Information

Gene Name	AIFM3
Alternative Names	AIFM3; AIFL; Apoptosis-inducing factor 3; Apoptosis-inducing factor-like protein
Gene ID	150209.0
SwissProt ID	Q96NN9
Immunogen	The antiserum was produced against synthesized peptide derived from human AIFM3. AA range:10-59

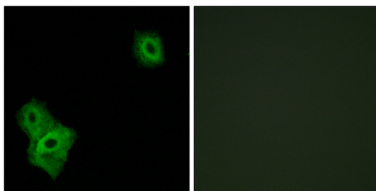
Background

domain:The Rieske domain induces apoptosis.,function:Induces apoptosis through a caspase dependent pathway. Reduces

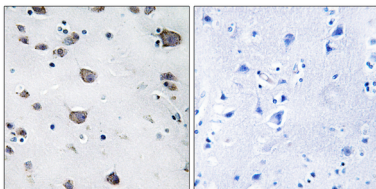
mitochondrial membrane potential.,similarity:Belongs to the FAD-dependent oxidoreductase family.,similarity:Contains 1 Rieske domain.,subcellular location:Does not translocate to the nucleus upon induction of apoptosis.,tissue specificity:Ubiquitous. Expressed in bone marrow, cerebral cortex, liver, ovary, thymus, thyroid gland and tongue (at protein level),.domain:The Rieske domain induces apoptosis.,function:Induces apoptosis through a caspase dependent pathway. Reduces mitochondrial membrane potential.,similarity:Belongs to the FAD-dependent oxidoreductase family.,similarity:Contains 1 Rieske domain.,subcellular location:Does not translocate to the nucleus upon induction of apoptosis.,tissue specificity:Ubiquitous. Expressed in bone marrow, cerebral cortex, liver, ovary, thymus, thyroid gland and tongue (at protein level),.

Research Area

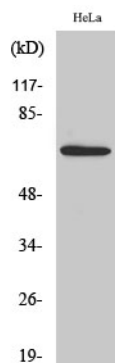
Image Data



Immunofluorescence analysis of A549 cells, using AIFM3 Antibody. The picture on the right is blocked with the synthesized peptide.



Immunohistochemistry analysis of paraffin-embedded human brain, using AIFM3 Antibody. The picture on the right is blocked with the synthesized peptide.



Western Blot analysis of various cells using AIFL Polyclonal Antibody