

---

**Product Name: AI-BP Rabbit Polyclonal Antibody****Catalog #: APRab06696**

For research use only.

**Summary**

<b>Description</b>	Rabbit polyclonal Antibody
<b>Host</b>	Rabbit
<b>Application</b>	WB,ICC/IF,ELISA
<b>Reactivity</b>	Human,Mouse,Rat
<b>Conjugation</b>	Unconjugated
<b>Modification</b>	Unmodified
<b>Isotype</b>	IgG
<b>Clonality</b>	Polyclonal
<b>Form</b>	Liquid
<b>Concentration</b>	1mg/ml
<b>Storage</b>	Aliquot and store at -20°C (valid for 12 months). Avoid freeze/thaw cycles.
<b>Shipping</b>	Ice bags
<b>Buffer</b>	Liquid in PBS containing 50% glycerol, 0.5% protective protein and 0.02% New type preservative N.
<b>Purification</b>	Affinity purification

**Application**

<b>Dilution Ratio</b>	WB 1:500-1:2000,ICC/IF 1:200-1:1000,ELISA 1:20000-1:40000
<b>Molecular Weight</b>	30kDa

**Antigen Information**

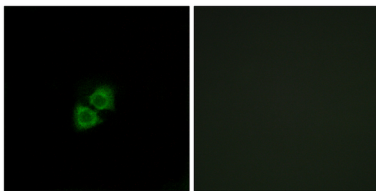
<b>Gene Name</b>	APOA1BP
<b>Alternative Names</b>	APOA1BP; AIBP; YJEFN1; NAD(P)H-hydrate epimerase; Apolipoprotein A-I-binding protein; AI-BP; NAD(P)HX epimerase; YjeF N-terminal domain-containing protein 1; YjeF_N1
<b>Gene ID</b>	128240.0
<b>SwissProt ID</b>	Q8NCW5
<b>Immunogen</b>	The antiserum was produced against synthesized peptide derived from human AIBP. AA range:121-170

**Background**

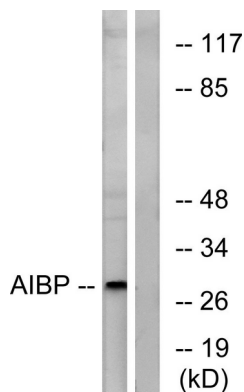
The product of this gene interacts with apolipoprotein A-I (apoA-I), the major apolipoprotein of high-density lipoproteins (HDLs). It is secreted into some bodily fluids, and its synthesis and secretion are stimulated in vitro by incubating cells with apoA-I. The human genome contains related pseudogenes. [provided by RefSeq, Jul 2008],similarity:Contains 1 YjeF N-terminal domain.,subunit:Interacts with APOA1 and APOA2.,tissue specificity:Ubiquitously expressed, with highest levels in kidney, heart and liver. Present in cerebrospinal fluid and urine but not in serum from healthy patients. Present in serum of sepsis patients (at protein level),,

## Research Area

## Image Data



Immunofluorescence analysis of A549 cells, using AIBP Antibody. The picture on the right is blocked with the synthesized peptide.



Western blot analysis of lysates from HeLa cells, using AIBP Antibody. The lane on the right is blocked with the synthesized peptide.



Western Blot analysis of various cells using AI-BP Polyclonal Antibody diluted at 1:2000