

**Product Name: AHA-1 Rabbit Polyclonal Antibody****Catalog #: APRab06691**

For research use only.

**Summary**

<b>Description</b>	Rabbit polyclonal Antibody
<b>Host</b>	Rabbit
<b>Application</b>	WB,IHC,ICC/IF,ELISA
<b>Reactivity</b>	Human,Rat,Mouse
<b>Conjugation</b>	Unconjugated
<b>Modification</b>	Unmodified
<b>Isotype</b>	IgG
<b>Clonality</b>	Polyclonal
<b>Form</b>	Liquid
<b>Concentration</b>	1mg/ml
<b>Storage</b>	Aliquot and store at -20°C (valid for 12 months). Avoid freeze/thaw cycles.
<b>Shipping</b>	Ice bags
<b>Buffer</b>	Liquid in PBS containing 50% glycerol, 0.5% protective protein and 0.02% New type preservative N.
<b>Purification</b>	Affinity purification

**Application**

<b>Dilution Ratio</b>	WB 1:500-1:2000,IHC 1:100-1:300,ICC/IF 1:50-1:200,ELISA 1:5000-1:20000
<b>Molecular Weight</b>	38kDa

**Antigen Information**

<b>Gene Name</b>	AHSA1
<b>Alternative Names</b>	AHSA1; C14orf3; HSPC322; Activator of 90 kDa heat shock protein ATPase homolog 1; AHA1; p38
<b>Gene ID</b>	10598.0
<b>SwissProt ID</b>	O95433
<b>Immunogen</b>	The antiserum was produced against synthesized peptide derived from human AHSA1. AA range:161-210

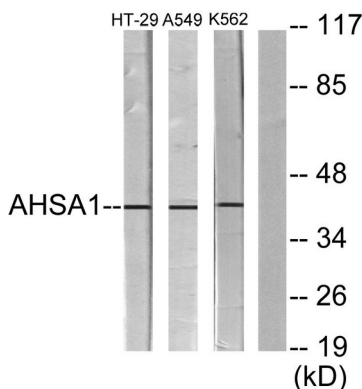
**Background**

function:Cochaperone that stimulates HSP90 ATPase activity (By similarity). May affect a step in the endoplasmic reticulum to Golgi trafficking.,induction:By heat shock and treatment with the HSP90 inhibitor 17-demethoxygeldanamycin (17AAG),similarity:Belongs to the AHA1 family.,subcellular location:May transiently interact with the endoplasmic reticulum.,subunit:Interacts with HSPCA/HSP90 and with the cytoplasmic tail of the vesicular stomatitis virus glycoprotein (VSV G). Interacts with GCH1.,tissue specificity:Expressed in numerous tissues, including brain, heart, skeletal muscle and kidney and, at lower levels, liver and placenta.,function:Cochaperone that stimulates HSP90 ATPase activity (By similarity). May affect a step in the endoplasmic reticulum to Golgi trafficking.,induction:By heat shock and treatment with the HSP90 inhibitor 17-demethoxygeldanamycin (17AAG),similarity:Belongs to the AHA1 family.,subcellular location:May transiently interact with the endoplasmic reticulum.,subunit:Interacts with HSPCA/HSP90 and with the cytoplasmic tail of the vesicular stomatitis virus glycoprotein (VSV G). Interacts with GCH1.,tissue specificity:Expressed in numerous tissues, including brain, heart, skeletal muscle and kidney and, at lower levels, liver and placenta.,

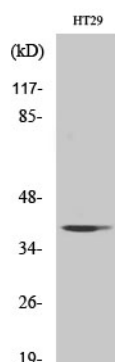
## Research Area

Signal Transduction

## Image Data



Western blot analysis of lysates from HT-29, A549, and K562 cells, using AHSA1 Antibody. The lane on the right is blocked with the synthesized peptide.



Western Blot analysis of various cells using AHA-1 Polyclonal Antibody diluted at 1: 1000