
Product Name: AGS3 Rabbit Polyclonal Antibody**Catalog #: APRab06682**

For research use only.

Summary

Description	Rabbit polyclonal Antibody
Host	Rabbit
Application	IHC,ICC/IF,ELISA
Reactivity	Human,Mouse,Rat
Conjugation	Unconjugated
Modification	Unmodified
Isotype	IgG
Clonality	Polyclonal
Form	Liquid
Concentration	1mg/ml
Storage	Aliquot and store at -20°C (valid for 12 months). Avoid freeze/thaw cycles.
Shipping	Ice bags
Buffer	Liquid in PBS containing 50% glycerol, 0.5% protective protein and 0.02% New type preservative N.
Purification	Affinity purification

Application

Dilution Ratio IHC 1:100-1:300,ICC/IF 1:50-1:200,ELISA 1:5000-1:10000

Molecular Weight

Antigen Information

Gene Name	GPSM1
Alternative Names	GPSM1; AGS3; G-protein-signaling modulator 1; Activator of G-protein signaling 3
Gene ID	26086.0
SwissProt ID	Q86YR5
Immunogen	Synthesized peptide derived from the Internal region of human AGS3.

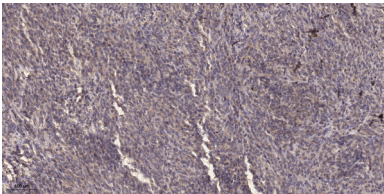
Background

G-protein signaling modulators (GPSMs) play diverse functional roles through their interaction with G-protein subunits. This gene encodes a receptor-independent activator of G protein signaling, which is one of several factors that influence the basal

activity of G-protein signaling systems. The protein contains seven tetratricopeptide repeats in its N-terminal half and four G-protein regulatory (GPR) motifs in its C-terminal half. Multiple alternatively spliced transcript variants encoding different isoforms have been found for this gene. [provided by RefSeq, Dec 2011],domain:The GoLoco domains mediate interaction with G(i/o) alpha (By similarity). The GoLoco domains are essential for the GDI activity toward G(i/o) alpha.,function:Guanine nucleotide dissociation inhibitor (GDI) which functions as a receptor-independent activator of heterotrimeric G-protein signaling. Keeps G(i/o) alpha subunit in its GDP-bound form thus uncoupling heterotrimeric G-proteins signaling from G protein-coupled receptors. Controls spindle orientation and asymmetric cell fate of cerebral cortical progenitors. May also be involved in macroautophagy in intestinal cells. May play a role in drug addiction.,PTM:Phosphorylation regulates interaction with G(i/o) alpha.,similarity:Belongs to the GPM family.,similarity:Contains 4 GoLoco domains.,similarity:Contains 9 TPR repeats.,subunit:Interacts with GNAI1, GNAI2 and GNAI3 preferentially in their GDP-bound state. May also interact with GNAO1. Interacts with STK11/LKB1 and MACF1 (By similarity). Interacts with INSC/inscuteable and FRMPD1.,tissue specificity:Expressed in intestinal cells.,

Research Area

Image Data



Immunohistochemical analysis of paraffin-embedded human Colon cancer. 1, Antibody was diluted at 1:200 (4° overnight) . 2, Tris-EDTA,pH9.0 was used for antigen retrieval. 3,Secondary antibody was diluted at 1:200 (room temperature, 45min) .