
Product Name: ADP-GK Rabbit Polyclonal Antibody**Catalog #: APRab06643**

For research use only.

Summary

Description	Rabbit polyclonal Antibody
Host	Rabbit
Application	WB,IHC,ICC/IF,ELISA
Reactivity	Human,Mouse,Rat
Conjugation	Unconjugated
Modification	Unmodified
Isotype	IgG
Clonality	Polyclonal
Form	Liquid
Concentration	1mg/ml
Storage	Aliquot and store at -20°C (valid for 12 months). Avoid freeze/thaw cycles.
Shipping	Ice bags
Buffer	Liquid in PBS containing 50% glycerol, 0.5% protective protein and 0.02% New type preservative N.
Purification	Affinity purification

Application

Dilution Ratio	WB 1:500-1:2000,IHC 1:100-1:300,ICC/IF 1:200-1:1000,ELISA 1:20000-1:40000
Molecular Weight	47kDa

Antigen Information

Gene Name	ADPGK
Alternative Names	ADPGK; PSEC0260; ADP-dependent glucokinase; ADP-GK; ADPGK; RbBP-35
Gene ID	83440.0
SwissProt ID	Q9BRR6
Immunogen	The antiserum was produced against synthesized peptide derived from human ADPGK. AA range:241-290

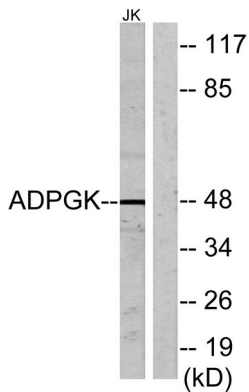
Background

ADPGK (EC 2.7.1.147) catalyzes the ADP-dependent phosphorylation of glucose to glucose-6-phosphate and may play a role in

glycolysis, possibly during ischemic conditions (Ronimus and Morgan, 2004 [PubMed 14975750]).[supplied by OMIM, Mar 2008],catalytic activity:ADP + D-glucose = AMP + D-glucose 6-phosphate.,cofactor:Binds 1 magnesium ion per subunit.,function:Catalyzes the phosphorylation of D-glucose to D-glucose 6-phosphate using ADP as the phosphate donor. GDP and CDP can replace ADP, but with reduced efficiency.,pathway:Carbohydrate degradation; glycolysis.,similarity:Belongs to the ADP-dependent glucokinase family.,similarity:Contains 1 ADPK (ADP-dependent kinase) domain.,subunit:Monomer.,

Research Area

Image Data



Western blot analysis of lysates from Jurkat cells, using ADPGK Antibody. The lane on the right is blocked with the synthesized peptide.