

Product Name: Adducin γ Rabbit Polyclonal Antibody**Catalog #: APRab06620**

For research use only.

Summary

| | |
|----------------------|---|
| Description | Rabbit polyclonal Antibody |
| Host | Rabbit |
| Application | WB,IHC,ICC/IF,ELISA |
| Reactivity | Human,Mouse,Rat |
| Conjugation | Unconjugated |
| Modification | Unmodified |
| Isotype | IgG |
| Clonality | Polyclonal |
| Form | Liquid |
| Concentration | 1mg/ml |
| Storage | Aliquot and store at -20°C (valid for 12 months). Avoid freeze/thaw cycles. |
| Shipping | Ice bags |
| Buffer | Liquid in PBS containing 50% glycerol, 0.5% protective protein and 0.02% New type preservative N. |
| Purification | Affinity purification |

Application

| | |
|-------------------------|--|
| Dilution Ratio | WB 1:500-1:2000,IHC 1:100-1:300,ICC/IF 1:200-1:1000,ELISA 1:5000-1:20000 |
| Molecular Weight | 75kDa |

Antigen Information

| | |
|--------------------------|--|
| Gene Name | ADD3 |
| Alternative Names | ADD3; ADDL; Gamma-adducin; Adducin-like protein 70 |
| Gene ID | 120.0 |
| SwissProt ID | Q9UEY8 |
| Immunogen | The antiserum was produced against synthesized peptide derived from human ADD3. AA range:431-480 |

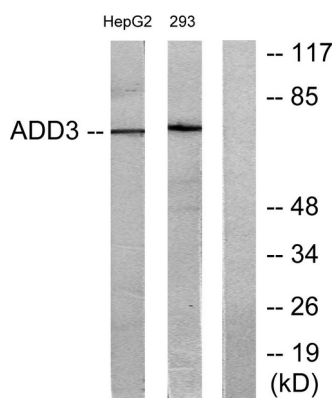
Background

adducin 3(ADD3) Homo sapiens Adducins are heteromeric proteins composed of different subunits referred to as adducin

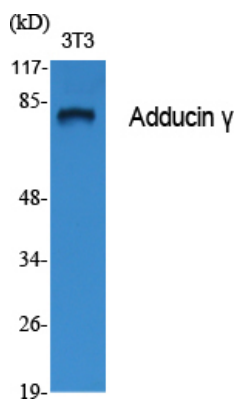
alpha, beta and gamma. The three subunits are encoded by distinct genes and belong to a family of membrane skeletal proteins involved in the assembly of spectrin-actin network in erythrocytes and at sites of cell-cell contact in epithelial tissues. While adducins alpha and gamma are ubiquitously expressed, the expression of adducin beta is restricted to brain and hematopoietic tissues. Adducin, originally purified from human erythrocytes, was found to be a heterodimer of adducins alpha and beta. Polymorphisms resulting in amino acid substitutions in these two subunits have been associated with the regulation of blood pressure in an animal model of hypertension. Heterodimers consisting of alpha and gamma subunits have also been described. Structurally, each subunit is comprised of two distinct domains. The amino-terminal region ialternative products:Additional isoforms seem to exist,domain:Comprised of three regions: a N-terminal protease-resistant globular head region, a short connecting subdomain, and a protease-sensitive tail region.,function:Membrane-cytoskeleton-associated protein that promotes the assembly of the spectrin-actin network. Binds to calmodulin.,PTM:Sumoylated.,similarity:Belongs to the aldolase class II family. Adducin subfamily.,subunit:Heterodimer of an alpha and a gamma subunit.,tissue specificity:Heart only expresses isoform 1.,

Research Area

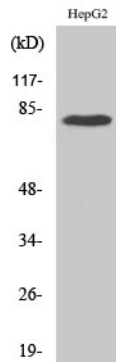
Image Data



Western blot analysis of lysates from HepG2 and 293 cells, using ADD3 Antibody. The lane on the right is blocked with the synthesized peptide.



Western Blot analysis of various cells using Adducin γ Polyclonal Antibody



Western Blot analysis of 293 cells using Adducin γ Polyclonal Antibody