
Product Name: ADCK5 Rabbit Polyclonal Antibody**Catalog #: APRab06611**

For research use only.

Summary

Description	Rabbit polyclonal Antibody
Host	Rabbit
Application	WB,ICC/IF,ELISA
Reactivity	Human,Rat,Mouse
Conjugation	Unconjugated
Modification	Unmodified
Isotype	IgG
Clonality	Polyclonal
Form	Liquid
Concentration	1mg/ml
Storage	Aliquot and store at -20°C (valid for 12 months). Avoid freeze/thaw cycles.
Shipping	Ice bags
Buffer	Liquid in PBS containing 50% glycerol, 0.5% protective protein and 0.02% New type preservative N.
Purification	Affinity purification

Application

Dilution Ratio	WB 1:500-1:2000,ICC/IF 1:200-1:1000,ELISA 1:10000-1:20000
Molecular Weight	66kDa

Antigen Information

Gene Name	ADCK5
Alternative Names	ADCK5; Uncharacterized aarF domain-containing protein kinase 5
Gene ID	203054.0
SwissProt ID	Q3MIX3
Immunogen	The antiserum was produced against synthesized peptide derived from human ADCK5. AA range:151-200

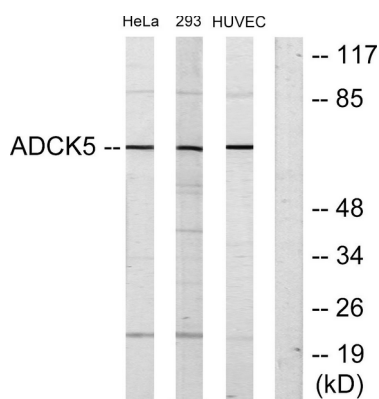
Background

function:The function of this protein is not yet clear. It is not known if it has protein kinase activity and what type of substrate it

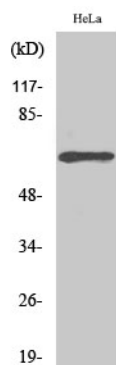
would phosphorylate (Ser, Thr or Tyr),,similarity:Belongs to the protein kinase superfamily. ADCK protein kinase family,,similarity:Contains 1 protein kinase domain,,function:The function of this protein is not yet clear. It is not known if it has protein kinase activity and what type of substrate it would phosphorylate (Ser, Thr or Tyr),,similarity:Belongs to the protein kinase superfamily. ADCK protein kinase family,,similarity:Contains 1 protein kinase domain.,

Research Area

Image Data



Western blot analysis of lysates from HeLa, 293, and HUVEC cells, using ADCK5 Antibody. The lane on the right is blocked with the synthesized peptide.



Western Blot analysis of various cells using ADCK5 Polyclonal Antibody