
Product Name: ADCK2 Rabbit Polyclonal Antibody**Catalog #: APRab06609**

For research use only.

Summary

Description	Rabbit polyclonal Antibody
Host	Rabbit
Application	WB,IHC,ICC/IF,ELISA
Reactivity	Human,Rat,Mouse
Conjugation	Unconjugated
Modification	Unmodified
Isotype	IgG
Clonality	Polyclonal
Form	Liquid
Concentration	1mg/ml
Storage	Aliquot and store at -20°C (valid for 12 months). Avoid freeze/thaw cycles.
Shipping	Ice bags
Buffer	Liquid in PBS containing 50% glycerol, 0.5% protective protein and 0.02% New type preservative N.
Purification	Affinity purification

Application

Dilution Ratio	WB 1:500-1:2000,IHC 1:100-1:300,ICC/IF 1:200-1:1000,ELISA 1:5000-1:20000
Molecular Weight	69kDa

Antigen Information

Gene Name	ADCK2
Alternative Names	ADCK2; AARF; Uncharacterized aarF domain-containing protein kinase 2
Gene ID	90956.0
SwissProt ID	Q7Z695
Immunogen	The antiserum was produced against synthesized peptide derived from human ADCK2. AA range:241-290

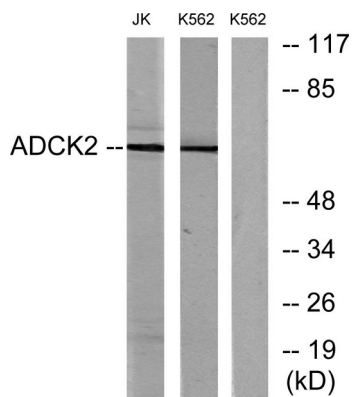
Background

function:The function of this protein is not yet clear. It is not known if it has protein kinase activity and what type of substrate it

would phosphorylate (Ser, Thr or Tyr),,sequence caution:Aberrant splicing,,similarity:Belongs to the protein kinase superfamily. ADCK protein kinase family,,similarity:Contains 1 protein kinase domain,,function:The function of this protein is not yet clear. It is not known if it has protein kinase activity and what type of substrate it would phosphorylate (Ser, Thr or Tyr),,sequence caution:Aberrant splicing,,similarity:Belongs to the protein kinase superfamily. ADCK protein kinase family,,similarity:Contains 1 protein kinase domain.,

Research Area

Image Data



Western blot analysis of lysates from Jurkat and K562 cells, using ADCK2 Antibody. The lane on the right is blocked with the synthesized peptide.