
Product Name: ADCK1 Rabbit Polyclonal Antibody**Catalog #: APRab06608**

For research use only.

Summary

Description	Rabbit polyclonal Antibody
Host	Rabbit
Application	WB,IHC,ICC/IF,ELISA
Reactivity	Human,Mouse
Conjugation	Unconjugated
Modification	Unmodified
Isotype	IgG
Clonality	Polyclonal
Form	Liquid
Concentration	1mg/ml
Storage	Aliquot and store at -20°C (valid for 12 months). Avoid freeze/thaw cycles.
Shipping	Ice bags
Buffer	Liquid in PBS containing 50% glycerol, 0.5% protective protein and 0.02% New type preservative N.
Purification	Affinity purification

Application

Dilution Ratio	WB 1:500-1:2000,IHC 1:100-1:300,ICC/IF 1:200-1:1000,ELISA 1:5000-1:10000
Molecular Weight	61kDa

Antigen Information

Gene Name	ADCK1
Alternative Names	ADCK1; Uncharacterized aarF domain-containing protein kinase 1
Gene ID	57143.0
SwissProt ID	Q86TW2
Immunogen	The antiserum was produced against synthesized peptide derived from human ADCK1. AA range:251-300

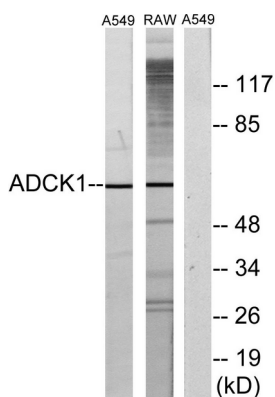
Background

function:The function of this protein is not yet clear. It is not known if it has protein kinase activity and what type of substrate it

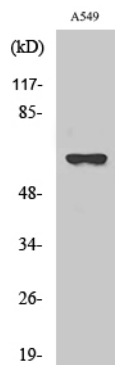
would phosphorylate (Ser, Thr or Tyr),,similarity:Belongs to the protein kinase superfamily. ADCK protein kinase family,,similarity:Contains 1 protein kinase domain,,function:The function of this protein is not yet clear. It is not known if it has protein kinase activity and what type of substrate it would phosphorylate (Ser, Thr or Tyr),,similarity:Belongs to the protein kinase superfamily. ADCK protein kinase family,,similarity:Contains 1 protein kinase domain.,

Research Area

Image Data



Western blot analysis of lysates from A549 and RAW264.7 cells, using ADCK1 Antibody. The lane on the right is blocked with the synthesized peptide.



Western Blot analysis of various cells using ADCK1 Polyclonal Antibody