

Product Name: ADAMDEC1 Rabbit Polyclonal Antibody**Catalog #: APRab06594**

For research use only.

Summary

Description	Rabbit polyclonal Antibody
Host	Rabbit
Application	IHC, ICC/IF, ELISA
Reactivity	Human, Rat, Mouse
Conjugation	Unconjugated
Modification	Unmodified
Isotype	IgG
Clonality	Polyclonal
Form	Liquid
Concentration	1mg/ml
Storage	Aliquot and store at -20°C (valid for 12 months). Avoid freeze/thaw cycles.
Shipping	Ice bags
Buffer	Liquid in PBS containing 50% glycerol, 0.5% protective protein and 0.02% New type preservative N.
Purification	Affinity purification

Application

Dilution Ratio	IHC 1:100-1:300, ICC/IF 1:50-1:200, ELISA 1:20000-1:40000
Molecular Weight	52kDa

Antigen Information

Gene Name	ADAMDEC1
Alternative Names	ADAMDEC1; ADAM DEC1; A disintegrin and metalloproteinase domain-like protein decysin-1; ADAM-like protein decysin-1
Gene ID	27299.0
SwissProt ID	O15204
Immunogen	Synthesized peptide derived from ADAMDEC1 . at AA range: 10-90

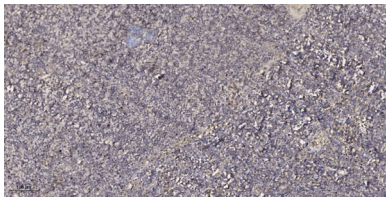
Background

This encoded protein is thought to be a secreted protein belonging to the disintegrin metalloproteinase family. Its expression is

upregulated during dendritic cells maturation. This protein may play an important role in dendritic cell function and their interactions with germinal center T cells. [provided by RefSeq, Jul 2008],cofactor: Binds 1 zinc ion per subunit.,function: May play an important role in the control of the immune response and during pregnancy.,induction: Induced during DC maturation and up-regulated in response to T-cell signals. In macrophage up-regulated by lipopolysaccharide (LPS). Up-regulated by 1 alpha, 25 dihydroxyvitamin D3 during differentiation of primary monocyte into macrophage.,similarity: Contains 1 disintegrin domain.,similarity: Contains 1 peptidase M12B domain.,tissue specificity: Expressed highly in the small intestine and appendix, moderately in lymph node, mucosal lining of the colon, thymus, spleen and very weakly in the bone marrow. Predominantly expressed in dendritic cells (DC) of the germinal center. Weakly expressed in monocyte and highly expressed in macrophage. Absent in immature DC.,

Research Area

Image Data



Immunohistochemical analysis of paraffin-embedded human tonsil. 1, Antibody was diluted at 1:200 (4° overnight) . 2, Tris-EDTA,pH9.0 was used for antigen retrieval. 3,Secondary antibody was diluted at 1:200 (room temperature, 30min) .