
Product Name: Actin α 3 Rabbit Polyclonal Antibody**Catalog #: APRab06545**

For research use only.

Summary

Description	Rabbit polyclonal Antibody
Host	Rabbit
Application	WB,IHC,ICC/IF,ELISA
Reactivity	Human,Mouse,Rat
Conjugation	Unconjugated
Modification	Unmodified
Isotype	IgG
Clonality	Polyclonal
Form	Liquid
Concentration	1mg/ml
Storage	Aliquot and store at -20°C (valid for 12 months). Avoid freeze/thaw cycles.
Shipping	Ice bags
Buffer	Liquid in PBS containing 50% glycerol, 0.5% protective protein and 0.02% New type preservative N.
Purification	Affinity purification

Application

Dilution Ratio	WB 1:500-1:2000,IHC 1:100-1:300,ICC/IF 1:200-1:1000,ELISA 1:10000-1:20000
Molecular Weight	45kDa

Antigen Information

Gene Name	ACTG2
Alternative Names	ACTG2; ACTA3; ACTL3; ACTSG; Actin; gamma-enteric smooth muscle; Alpha-actin-3; Gamma-2-actin; Smooth muscle gamma-actin
Gene ID	72.0
SwissProt ID	P63267
Immunogen	The antiserum was produced against synthesized peptide derived from human Actin-gamma2. AA range:1-50

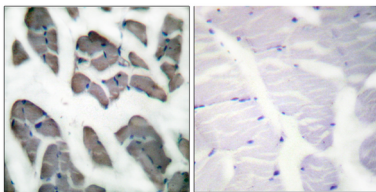
Background

Actins are highly conserved proteins that are involved in various types of cell motility and in the maintenance of the cytoskeleton. Three types of actins, alpha, beta and gamma, have been identified in vertebrates. Alpha actins are found in muscle tissues and are a major constituent of the contractile apparatus. The beta and gamma actins co-exist in most cell types as components of the cytoskeleton and as mediators of internal cell motility. This gene encodes actin gamma 2; a smooth muscle actin found in enteric tissues. Alternative splicing results in multiple transcript variants encoding distinct isoforms. Based on similarity to peptide cleavage of related actins, the mature protein of this gene is formed by removal of two N-terminal peptides.[provided by RefSeq, Dec 2010],function:Actins are highly conserved proteins that are involved in various types of cell motility and are ubiquitously expressed in all eukaryotic cells.,miscellaneous:In vertebrates 3 main groups of actin isoforms, alpha, beta and gamma have been identified. The alpha actins are found in muscle tissues and are a major constituent of the contractile apparatus. The beta and gamma actins coexist in most cell types as components of the cytoskeleton and as mediators of internal cell motility.,similarity:Belongs to the actin family.,subunit:Polymerization of globular actin (G-actin) leads to a structural filament (F-actin) in the form of a two-stranded helix. Each actin can bind to 4 others.,

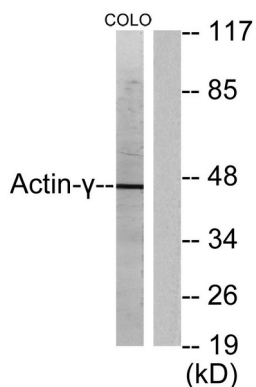
Research Area

Vascular smooth muscle contraction;

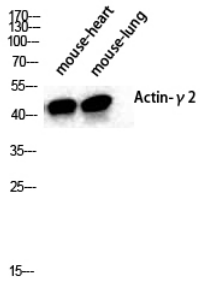
Image Data



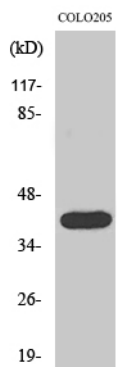
Immunohistochemistry analysis of paraffin-embedded human skeletal muscle tissue, using Actin-gamma2 Antibody. The picture on the right is blocked with the synthesized peptide.



Western blot analysis of lysates from COLO205 cells, using Actin-gamma2 Antibody. The lane on the right is blocked with the synthesized peptide.



Western Blot analysis of various cells using Actin $\alpha 3$ Polyclonal Antibody diluted at 1 : 2000



Western Blot analysis of COLO205 cells using Actin $\alpha 3$ Polyclonal Antibody diluted at 1 : 2000