
Product Name: ACOT12 Rabbit Polyclonal Antibody**Catalog #: APRab06514**

For research use only.

Summary

Description	Rabbit polyclonal Antibody
Host	Rabbit
Application	IHC,ICC/IF,ELISA
Reactivity	Human,Mouse,Rat
Conjugation	Unconjugated
Modification	Unmodified
Isotype	IgG
Clonality	Polyclonal
Form	Liquid
Concentration	1mg/ml
Storage	Aliquot and store at -20°C (valid for 12 months). Avoid freeze/thaw cycles.
Shipping	Ice bags
Buffer	Liquid in PBS containing 50% glycerol, 0.5% protective protein and 0.02% New type preservative N.
Purification	Affinity purification

Application

Dilution Ratio IHC 1:100-1:300,ICC/IF 1:200-1:1000,ELISA 1:20000-1:40000

Molecular Weight

Antigen Information

Gene Name	ACOT12 ACOT12; CACH; CACH1; STARD15; Acyl-coenzyme A thioesterase 12; Acyl-CoA thioesterase
Alternative Names	12; Acyl-CoA thioester hydrolase 12; Cytoplasmic acetyl-CoA hydrolase 1; CACH-1; hCACH-1; START domain-containing protein 15; StARD15
Gene ID	134526.0
SwissProt ID	Q8WYK0
Immunogen	The antiserum was produced against synthesized peptide derived from human ACOT12. AA range:281-330

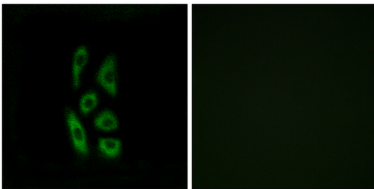
Background

catalytic activity:Acetyl-CoA + H₂O = CoA + acetate.,function:Hydrolyzes acetyl-CoA to acetate and CoA.,pathway:Carbohydrate metabolism; pyruvate metabolism.,similarity:Contains 1 START domain.,similarity:Contains 2 acyl coenzyme A hydrolase domains.,subunit:Homodimer or homotetramer.,catalytic activity:Acetyl-CoA + H₂O = CoA + acetate.,function:Hydrolyzes acetyl-CoA to acetate and CoA.,pathway:Carbohydrate metabolism; pyruvate metabolism.,similarity:Contains 1 START domain.,similarity:Contains 2 acyl coenzyme A hydrolase domains.,subunit:Homodimer or homotetramer.,

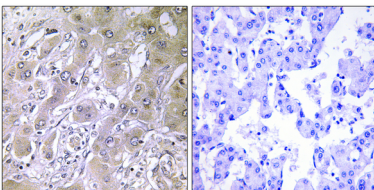
Research Area

Pyruvate metabolism;

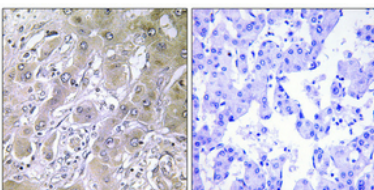
Image Data



Immunofluorescence analysis of A549 cells, using ACOT12 Antibody. The picture on the right is blocked with the synthesized peptide.



Immunohistochemistry analysis of paraffin-embedded human liver carcinoma tissue, using ACOT12 Antibody. The picture on the right is blocked with the synthesized peptide.



Immunohistochemical analysis of paraffin-embedded Human lung cancer. Antibody was diluted at 1:100 (4°,overnight) . High-pressure and temperature Tris-EDTA,pH8.0 was used for antigen retrieval. Negetive contrl (right) obtaned from antibody was pre-absorbed by immunogen peptide.