
Product Name: ACO2 Rabbit Polyclonal Antibody**Catalog #: APRab06509**

For research use only.

Summary

Description	Rabbit polyclonal Antibody
Host	Rabbit
Application	WB,ELISA
Reactivity	Human,Mouse,Rat,Other
Conjugation	Unconjugated
Modification	Unmodified
Isotype	IgG
Clonality	Polyclonal
Form	Liquid
Concentration	1mg/ml
Storage	Aliquot and store at -20°C (valid for 12 months). Avoid freeze/thaw cycles.
Shipping	Ice bags
Buffer	Liquid in PBS containing 50% glycerol, 0.5% protective protein and 0.02% New type preservative N.
Purification	Affinity purification

Application

Dilution Ratio	WB 1:500-1:2000,ELISA 1:5000-1:10000
Molecular Weight	90kDa

Antigen Information

Gene Name	ACO2
Alternative Names	Aconitate hydratase, mitochondrial (Aconitase) (EC 4.2.1.3) (Citrate hydro-lyase)
Gene ID	50.0
SwissProt ID	Q99798
Immunogen	Synthesized peptide derived from human ACO2. at AA range: 421-470

Background

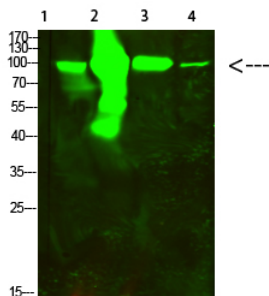
The protein encoded by this gene belongs to the aconitase/IPM isomerase family. It is an enzyme that catalyzes the interconversion of citrate to isocitrate via cis-aconitate in the second step of the TCA cycle. This protein is encoded in the

nucleus and functions in the mitochondrion. It was found to be one of the mitochondrial matrix proteins that are preferentially degraded by the serine protease 15 (PRSS15), also known as Lon protease, after oxidative modification. [provided by RefSeq, Jul 2008], catalytic activity: Citrate = isocitrate., cofactor: Binds 1 4Fe-4S cluster per subunit. Binding of a 3Fe-4S cluster leads to an inactive enzyme., online information: Aconitase entry, pathway: Carbohydrate metabolism; tricarboxylic acid cycle., similarity: Belongs to the aconitase/IPM isomerase family., subunit: Monomer.,

Research Area

Citrate cycle (TCA cycle); Glyoxylate and dicarboxylate metabolism;

Image Data



Western Blot analysis of 1, mouse-kidney 2, mouse-heart 3, 3T3 4, Hela cells using ACO2 Rabbit Polyclonal Antibody diluted at 1:500 (4°C overnight). Secondary antibody: Goat Anti-rabbit IgG IRDye 800 (diluted at 1:5000, 25°C, 1 hour)