
Product Name: AChR α 3 Rabbit Polyclonal Antibody**Catalog #: APRab06498**

For research use only.

Summary

Description	Rabbit polyclonal Antibody
Host	Rabbit
Application	WB,ELISA
Reactivity	Human,Mouse,Rat
Conjugation	Unconjugated
Modification	Unmodified
Isotype	IgG
Clonality	Polyclonal
Form	Liquid
Concentration	1mg/ml
Storage	Aliquot and store at -20°C (valid for 12 months). Avoid freeze/thaw cycles.
Shipping	Ice bags
Buffer	Liquid in PBS containing 50% glycerol, 0.5% protective protein and 0.02% New type preservative N.
Purification	Affinity purification

Application

Dilution Ratio	WB 1:500-1:2000,ELISA 1:5000-1:20000
Molecular Weight	57kDa

Antigen Information

Gene Name	CHRNA3
Alternative Names	CHRNA3; NACHRA3; Neuronal acetylcholine receptor subunit alpha-3
Gene ID	1136.0
SwissProt ID	P32297
Immunogen	The antiserum was produced against synthesized peptide derived from human AChRalpha3. AA range:90-139

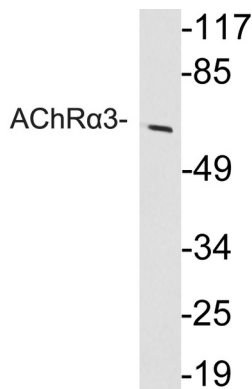
Background

This locus encodes a member of the nicotinic acetylcholine receptor family of proteins. Members of this family of proteins form

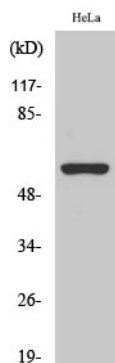
pentameric complexes comprised of both alpha and beta subunits. This locus encodes an alpha-type subunit, as it contains characteristic adjacent cysteine residues. The encoded protein is a ligand-gated ion channel that likely plays a role in neurotransmission. Polymorphisms in this gene have been associated with an increased risk of smoking initiation and an increased susceptibility to lung cancer. Alternatively spliced transcript variants have been described. [provided by RefSeq, Nov 2009],disease:Genetic variations in CHRNA3 may be associated with susceptibility to lung cancer type 2 (LNCR2) [MIM:612052].,disease:Genetic variations in CHRNA3 may be associated with susceptibility to peripheral arterial occlusive disease type 2 (PAOD2) [MIM:612052]. PAOD results from atherosclerosis of large and medium peripheral arteries, as well as the aorta. Many risk factors contribute to PAOD, including smoking, diabetes, hypertension, and hyperlipidemia. PAOD often coexists with coronary artery disease and cerebrovascular disease.,function:After binding acetylcholine, the AChR responds by an extensive change in conformation that affects all subunits and leads to opening of an ion-conducting channel across the plasma membrane.,similarity:Belongs to the ligand-gated ionic channel (TC 1.A.9) family.,subunit:Neuronal AChR is composed of two different types of subunits: alpha and beta. Alpha-3 subunit can be combined to beta-2 or beta-4 to give rise to functional receptors. Interacts with RIC3; which is required for proper folding and assembly.,

Research Area

Image Data



Western blot analysis of lysate from HeLa cells, using AChR α 3 antibody.



Western Blot analysis of various cells using AChR α 3 Polyclonal Antibody