

Product Name: Abin-2 Rabbit Polyclonal Antibody**Catalog #: APRab06450**

For research use only.

Summary

Description	Rabbit polyclonal Antibody
Host	Rabbit
Application	IHC, ICC/IF, ELISA
Reactivity	Human, Mouse, Rat
Conjugation	Unconjugated
Modification	Unmodified
Isotype	IgG
Clonality	Polyclonal
Form	Liquid
Concentration	1mg/ml
Storage	Aliquot and store at -20°C (valid for 12 months). Avoid freeze/thaw cycles.
Shipping	Ice bags
Buffer	Liquid in PBS containing 50% glycerol, 0.5% protective protein and 0.02% New type preservative N.
Purification	Affinity purification

Application

Dilution Ratio IHC 1:50-1:200, ICC/IF 1:50-1:200, ELISA 1:10000-1:20000

Molecular Weight

Antigen Information

Gene Name	TNIP2
Alternative Names	TNFAIP3-interacting protein 2 (A20-binding inhibitor of NF-kappa-B activation 2; ABIN-2; Fetal liver LKB1-interacting protein)
Gene ID	79155.0
SwissProt ID	Q8NFZ5
Immunogen	Synthetic peptide from human protein at AA range: 61-110

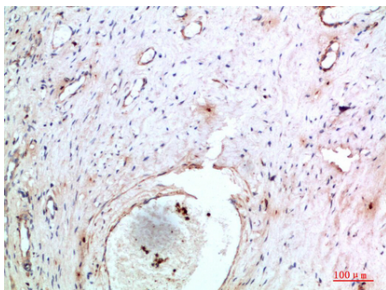
Background

This gene encodes a protein which acts as an inhibitor of NFkappaB activation. The encoded protein is also involved in

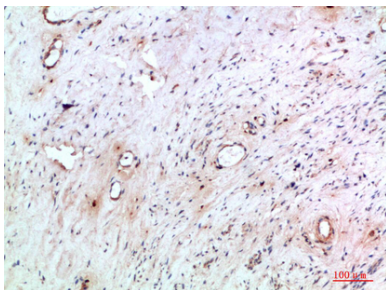
MAP/ERK signaling pathway in specific cell types. It may be involved in apoptosis of endothelial cells. Alternative splicing results in multiple transcript variants. A pseudogene related to this gene is located on the X chromosome.[provided by RefSeq, May 2014],function:Inhibits NF-kappa-B activation by blocking the interaction of RIPK1 with its downstream effector IKBKG. Forms a ternary complex with NFKB1 and MAP3K8 but appears to function upstream of MAP3K8 in the TLR4 signaling pathway that regulates MAP3K8 activation.,subunit:Interacts with STK11, TNFAIP3, IKBKG, NFKB1, MAP3K8 and RIPK1.,tissue specificity:Ubiquitously expressed in all tissues examined.,

Research Area

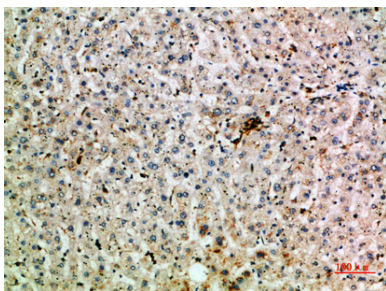
Image Data



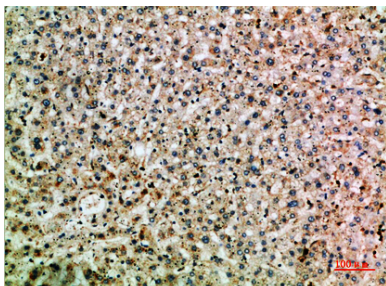
Immunohistochemical analysis of paraffin-embedded human-cervical-cancer, antibody was diluted at 1:200



Immunohistochemical analysis of paraffin-embedded human-cervical-cancer, antibody was diluted at 1:200



Immunohistochemical analysis of paraffin-embedded human-liver, antibody was diluted at 1:200



Immunohistochemical analysis of paraffin-embedded human-liver, antibody was diluted at 1:200

