
Product Name: ABHD6 Rabbit Polyclonal Antibody**Catalog #: APRab06441**

For research use only.

Summary

Description	Rabbit polyclonal Antibody
Host	Rabbit
Application	WB,ICC/IF,ELISA
Reactivity	Human,Mouse,Rat
Conjugation	Unconjugated
Modification	Unmodified
Isotype	IgG
Clonality	Polyclonal
Form	Liquid
Concentration	1mg/ml
Storage	Aliquot and store at -20°C (valid for 12 months). Avoid freeze/thaw cycles.
Shipping	Ice bags
Buffer	Liquid in PBS containing 50% glycerol, 0.5% protective protein and 0.02% New type preservative N.
Purification	Affinity purification

Application

Dilution Ratio	WB 1:500-1:2000,ICC/IF 1:200-1:1000,ELISA 1:10000-1:20000
Molecular Weight	38kDa

Antigen Information

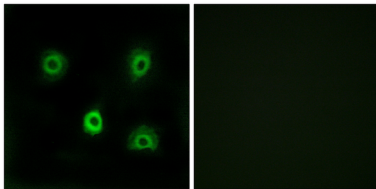
Gene Name	ABHD6
Alternative Names	ABHD6; Monoacylglycerol lipase ABHD6; 2-arachidonoylglycerol hydrolase; Abhydrolase domain-containing protein 6
Gene ID	57406.0
SwissProt ID	Q9BV23
Immunogen	The antiserum was produced against synthesized peptide derived from human ABHD6. AA range:231-280

Background

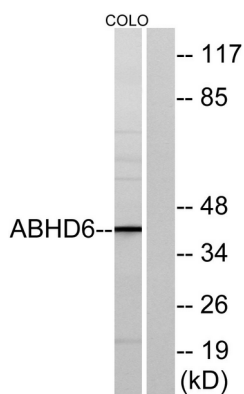
catalytic activity:Hydrolyzes glycerol monoesters of long-chain fatty acids.,function:Has 2-arachidonoylglycerol hydrolase activity (By similarity). May be a regulator of endocannabinoid signaling pathways.,similarity:Belongs to the AB hydrolase superfamily.,catalytic activity:Hydrolyzes glycerol monoesters of long-chain fatty acids.,function:Has 2-arachidonoylglycerol hydrolase activity (By similarity). May be a regulator of endocannabinoid signaling pathways.,similarity:Belongs to the AB hydrolase superfamily.,

Research Area

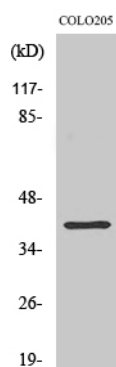
Image Data



Immunofluorescence analysis of A549 cells, using ABHD6 Antibody. The picture on the right is blocked with the synthesized peptide.



Western blot analysis of lysates from COLO cells, using ABHD6 Antibody. The lane on the right is blocked with the synthesized peptide.



Western Blot analysis of various cells using ABHD6 Polyclonal Antibody