

Product Name: ABHD14B Rabbit Polyclonal Antibody**Catalog #: APRab06436**

For research use only.

Summary

Description	Rabbit polyclonal Antibody
Host	Rabbit
Application	IHC, ICC/IF, ELISA
Reactivity	Human, Rat
Conjugation	Unconjugated
Modification	Unmodified
Isotype	IgG
Clonality	Polyclonal
Form	Liquid
Concentration	1mg/ml
Storage	Aliquot and store at -20°C (valid for 12 months). Avoid freeze/thaw cycles.
Shipping	Ice bags
Buffer	Liquid in PBS containing 50% glycerol, 0.5% protective protein and 0.02% New type preservative N.
Purification	Affinity purification

Application

Dilution Ratio IHC 1:100-1:300, ICC/IF 1:50-1:200, ELISA 1:20000-1:40000

Molecular Weight

Antigen Information

Gene Name	ABHD14B
Alternative Names	ABHD14B; CIB; Abhydrolase domain-containing protein 14B; CCG1-interacting factor B
Gene ID	84836.0
SwissProt ID	Q96IU4
Immunogen	The antiserum was produced against synthesized peptide derived from human ABHD14B. AA range:161-210

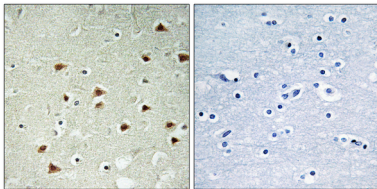
Background

function:Has hydrolase activity towards p-nitrophenyl butyrate (in vitro). May activate transcription.,similarity:Belongs to the

AB hydrolase superfamily. ABHD14 family.,subcellular location:Predominantly cytoplasmic.,subunit:May interact with TAF1.,tissue specificity:Ubiquitous. Detected in spleen, thymus, prostate, testis, ovary, small intestine, colon, peripheral blood leukocyte, heart, placenta, lung, liver, skeletal muscle, pancreas and kidney.,function:Has hydrolase activity towards p-nitrophenyl butyrate (in vitro). May activate transcription.,similarity:Belongs to the AB hydrolase superfamily. ABHD14 family.,subcellular location:Predominantly cytoplasmic.,subunit:May interact with TAF1.,tissue specificity:Ubiquitous. Detected in spleen, thymus, prostate, testis, ovary, small intestine, colon, peripheral blood leukocyte, heart, placenta, lung, liver, skeletal muscle, pancreas and kidney.,

Research Area

Image Data



Immunohistochemistry analysis of paraffin-embedded human brain tissue, using ABHD14B Antibody. The picture on the right is blocked with the synthesized peptide.