
Product Name: ABHD12 Rabbit Polyclonal Antibody**Catalog #: APRab06433**

For research use only.

Summary

Description	Rabbit polyclonal Antibody
Host	Rabbit
Application	WB,IHC,ICC/IF,ELISA
Reactivity	Human,Mouse,Rat
Conjugation	Unconjugated
Modification	Unmodified
Isotype	IgG
Clonality	Polyclonal
Form	Liquid
Concentration	1mg/ml
Storage	Aliquot and store at -20°C (valid for 12 months). Avoid freeze/thaw cycles.
Shipping	Ice bags
Buffer	Liquid in PBS containing 50% glycerol, 0.5% protective protein and 0.02% New type preservative N.
Purification	Affinity purification

Application

Dilution Ratio	WB 1:500-1:2000,IHC 1:100-1:300,ICC/IF 1:50-1:200,ELISA 1:20000-1:40000
Molecular Weight	45kDa

Antigen Information

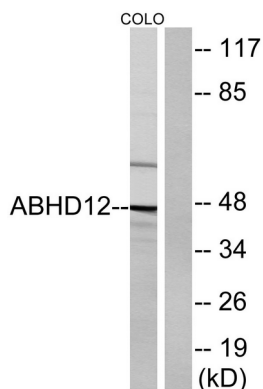
Gene Name	ABHD12
Alternative Names	ABHD12; C20orf22; Monoacylglycerol lipase ABHD12; 2-arachidonoylglycerol hydrolase; Abhydrolase domain-containing protein 12
Gene ID	26090.0
SwissProt ID	Q8N2K0
Immunogen	The antiserum was produced against synthesized peptide derived from human ABHD12. AA range:231-280

Background

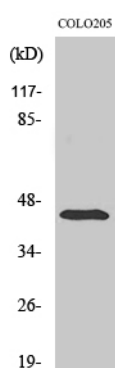
This gene encodes an enzyme that catalyzes the hydrolysis of 2-arachidonoyl glycerol (2-AG), the main endocannabinoid lipid transmitter that acts on cannabinoid receptors, CB1 and CB2. The endocannabinoid system is involved in a wide range of physiological processes, including neurotransmission, mood, appetite, pain appreciation, addiction behavior, and inflammation. Mutations in this gene are associated with the neurodegenerative disease, PHARC (polyneuropathy, hearing loss, ataxia, retinitis pigmentosa, and cataract), resulting from an inborn error of endocannabinoid metabolism. Alternatively spliced transcript variants encoding different isoforms have been noted for this gene.[provided by RefSeq, Jan 2011],catalytic activity:Hydrolyzes glycerol monoesters of long-chain fatty acids.,function:Has 2-arachidonoylglycerol hydrolase activity (By similarity). May be a regulator of endocannabinoid signaling pathways.,PTM:Glycosylated.,similarity:Belongs to the serine esterase family.,

Research Area

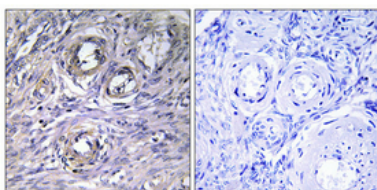
Image Data



Western blot analysis of lysates from COLO cells, using ABHD12 Antibody. The lane on the right is blocked with the synthesized peptide.



Western Blot analysis of various cells using ABHD12 Polyclonal Antibody



Immunohistochemical analysis of paraffin-embedded Human ovary. Antibody was diluted at 1:100 (4°, overnight). High-pressure and temperature Tris-EDTA, pH 8.0 was used for antigen retrieval. Negative control (right) obtained from antibody was pre-absorbed by immunogen peptide.