
Product Name: ABHD11 Rabbit Polyclonal Antibody**Catalog #: APRab06432**

For research use only.

Summary

Description	Rabbit polyclonal Antibody
Host	Rabbit
Application	WB,ELISA
Reactivity	Human,Rat,Mouse
Conjugation	Unconjugated
Modification	Unmodified
Isotype	IgG
Clonality	Polyclonal
Form	Liquid
Concentration	1mg/ml
Storage	Aliquot and store at -20°C (valid for 12 months). Avoid freeze/thaw cycles.
Shipping	Ice bags
Buffer	Liquid in PBS containing 50% glycerol, 0.5% protective protein and 0.02% New type preservative N.
Purification	Affinity purification

Application

Dilution Ratio	WB 1:500-1:2000,ELISA 1:10000-1:20000
Molecular Weight	32kDa

Antigen Information

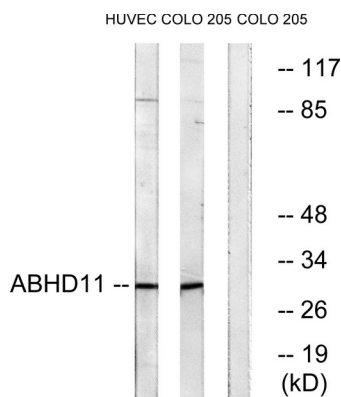
Gene Name	ABHD11
Alternative Names	ABHD11; WBSCR21; PP1226; Abhydrolase domain-containing protein 11; Williams-Beuren syndrome chromosomal region 21 protein
Gene ID	83451.0
SwissProt ID	Q8NFV4
Immunogen	The antiserum was produced against synthesized peptide derived from human ABHD11. AA range:161-210

Background

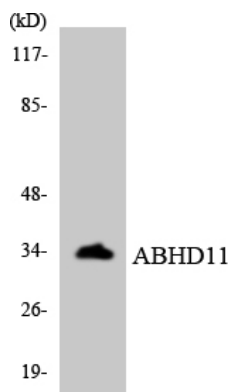
This gene encodes a protein containing an alpha/beta hydrolase fold domain. This gene is deleted in Williams syndrome, a multisystem developmental disorder caused by the deletion of contiguous genes at 7q11.23. [provided by RefSeq, Mar 2016],caution:It is uncertain whether Met-1 or Met-10 is the initiator.,sequence caution:Wrong choice of frame.,similarity:Belongs to the AB hydrolase superfamily.,tissue specificity:Ubiquitously expressed.,

Research Area

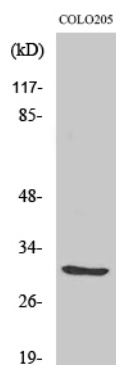
Image Data



Western blot analysis of lysates from COLO and HUVEC cells, using ABHD11 Antibody. The lane on the right is blocked with the synthesized peptide.



Western blot analysis of the lysates from HeLa cells using ABHD11 antibody.



Western Blot analysis of various cells using ABHD11 Polyclonal Antibody