

Product Name: ABCF2 Rabbit Polyclonal Antibody**Catalog #: APRab06421**

For research use only.

Summary

Description	Rabbit polyclonal Antibody
Host	Rabbit
Application	WB,ELISA
Reactivity	Human,Mouse,Rat
Conjugation	Unconjugated
Modification	Unmodified
Isotype	IgG
Clonality	Polyclonal
Form	Liquid
Concentration	1mg/ml
Storage	Aliquot and store at -20°C (valid for 12 months). Avoid freeze/thaw cycles.
Shipping	Ice bags
Buffer	Liquid in PBS containing 50% glycerol, 0.5% protective protein and 0.02% New type preservative N.
Purification	Affinity purification

Application

Dilution Ratio	WB 1:500-1:2000,ELISA 1:5000-1:10000
Molecular Weight	70kDa

Antigen Information

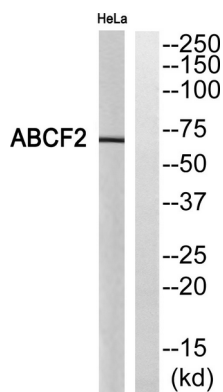
Gene Name	ABCF2
Alternative Names	ABCF2; HUSSY-18; ATP-binding cassette sub-family F member 2; Iron-inhibited ABC transporter 2
Gene ID	10061.0
SwissProt ID	Q9UG63
Immunogen	The antiserum was produced against synthesized peptide derived from human ABCF2. AA range:171-220

Background

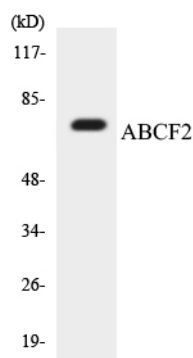
This gene encodes a member of the ATP-binding cassette (ABC) transporter superfamily. ATP-binding cassette proteins transport various molecules across extra- and intracellular membranes. Alterations in this gene may be involved in cancer progression. Alternative splicing results in multiple transcript variants. Related pseudogenes have been identified on chromosomes 3 and 7. [provided by RefSeq, Jul 2013],caution:Lacks transmembrane domains and is probably not involved in transport.,similarity:Belongs to the ABC transporter family.,similarity:Belongs to the ABC transporter family. EF3 subfamily.,similarity:Contains 2 ABC transporter domains.,

Research Area

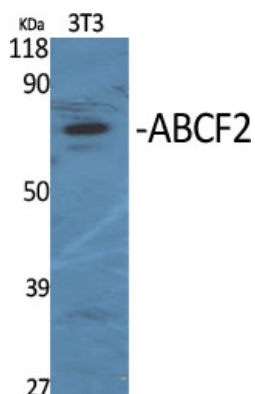
Image Data



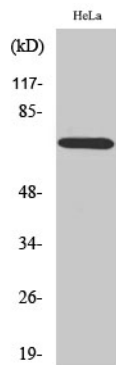
Western blot analysis of ABCF2 Antibody. The lane on the right is blocked with the ABCF2 peptide.



Western blot analysis of the lysates from HepG2 cells using ABCF2 antibody.



Western Blot analysis of various cells using ABCF2 Polyclonal Antibody



Western Blot analysis of HeLa cells using ABCF2 Polyclonal Antibody