

Product Name: ABCF1 Rabbit Polyclonal Antibody**Catalog #: APRab06420**

For research use only.

Summary

Description	Rabbit polyclonal Antibody
Host	Rabbit
Application	WB,ELISA
Reactivity	Human,Mouse,Rat
Conjugation	Unconjugated
Modification	Unmodified
Isotype	IgG
Clonality	Polyclonal
Form	Liquid
Concentration	1mg/ml
Storage	Aliquot and store at -20°C (valid for 12 months). Avoid freeze/thaw cycles.
Shipping	Ice bags
Buffer	Liquid in PBS containing 50% glycerol, 0.5% protective protein and 0.02% New type preservative N.
Purification	Affinity purification

Application

Dilution Ratio	WB 1:500-1:2000,ELISA 1:5000-1:20000
Molecular Weight	95kDa

Antigen Information

Gene Name	ABCF1
Alternative Names	ABCF1; ABC50; ATP-binding cassette sub-family F member 1; ATP-binding cassette 50; TNF-alpha-stimulated ABC protein
Gene ID	23.0
SwissProt ID	Q8NE71
Immunogen	Synthesized peptide derived from ABCF1 . at AA range: 760-840

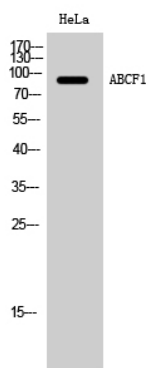
Background

The protein encoded by this gene is a member of the superfamily of ATP-binding cassette (ABC) transporters. ABC proteins

transport various molecules across extra- and intra-cellular membranes. ABC genes are divided into seven distinct subfamilies (ABC1, MDR/TAP, MRP, ALD, OABP, GCN20, White). This protein is a member of the GCN20 subfamily. Unlike other members of the superfamily, this protein lacks the transmembrane domains which are characteristic of most ABC transporters. This protein may be regulated by tumor necrosis factor-alpha and play a role in enhancement of protein synthesis and the inflammation process. [provided by RefSeq, Jul 2008],function:May function in mRNA translation.,induction:By TNF (in cultured synoviocytes),.PTM:Phosphorylated upon DNA damage, probably by ATM or ATR.,similarity:Belongs to the ABC transporter family.,similarity:Belongs to the ABC transporter family. EF3 subfamily.,similarity:Contains 2 ABC transporter domains.,subunit:Interacts with eukaryotic initiation factor 2 (eIF2). Associates with the ribosomes.,tissue specificity:Ubiquitous.,

Research Area

Image Data



Western Blot analysis of HeLa cells using ABCF1 Polyclonal Antibody