

**Product Name: ABCA13 Rabbit Polyclonal Antibody****Catalog #: APRab06392**

For research use only.

**Summary**

<b>Description</b>	Rabbit polyclonal Antibody
<b>Host</b>	Rabbit
<b>Application</b>	ICC/IF,ELISA
<b>Reactivity</b>	Human,Rat,Mouse
<b>Conjugation</b>	Unconjugated
<b>Modification</b>	Unmodified
<b>Isotype</b>	IgG
<b>Clonality</b>	Polyclonal
<b>Form</b>	Liquid
<b>Concentration</b>	1mg/ml
<b>Storage</b>	Aliquot and store at -20°C (valid for 12 months). Avoid freeze/thaw cycles.
<b>Shipping</b>	Ice bags
<b>Buffer</b>	Liquid in PBS containing 50% glycerol, 0.5% protective protein and 0.02% New type preservative N.
<b>Purification</b>	Affinity purification

**Application**

<b>Dilution Ratio</b>	ICC/IF 1:200-1:1000,ELISA 1:20000-1:40000
<b>Molecular Weight</b>	

**Antigen Information**

<b>Gene Name</b>	ABCA13
<b>Alternative Names</b>	ABCA13; ATP-binding cassette sub-family A member 13
<b>Gene ID</b>	154664.0
<b>SwissProt ID</b>	Q86UQ4
<b>Immunogen</b>	The antiserum was produced against synthesized peptide derived from human ABCA13. AA range:2251-2300

**Background**

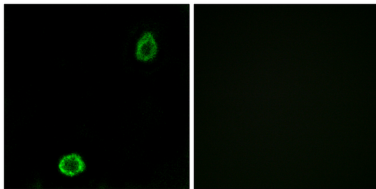
In human, the ATP-binding cassette (ABC) family of transmembrane transporters has at least 48 genes and 7 gene subfamilies.

This gene is a member of ABC gene subfamily A (ABCA). Genes within the ABCA family typically encode several thousand amino acids. Like other ABC transmembrane transporter proteins, this protein has 12 or more transmembrane alpha-helix domains that likely arrange to form a single central chamber with multiple substrate binding sites. It is also predicted to have two large extracellular domains and two nucleotide binding domains as is typical for ABCA proteins. Alternative splice variants have been described but their biological validity has not been demonstrated.[provided by RefSeq, Mar 2009],sequence caution:Translated as Glu.,similarity:Belongs to the ABC transporter family.,similarity:Contains 2 ABC transporter domains.,tissue specificity:Expressed in testis, bone marrow and trachea.,

## Research Area

ABC transporters;

## Image Data



Immunofluorescence analysis of A549 cells, using ABCA13 Antibody. The picture on the right is blocked with the synthesized peptide.