
Product Name: AASD-PPT Rabbit Polyclonal Antibody**Catalog #: APRab06381**

For research use only.

Summary

Description	Rabbit polyclonal Antibody
Host	Rabbit
Application	WB,IHC,ICC/IF,ELISA
Reactivity	Human,Mouse,Rat
Conjugation	Unconjugated
Modification	Unmodified
Isotype	IgG
Clonality	Polyclonal
Form	Liquid
Concentration	1mg/ml
Storage	Aliquot and store at -20°C (valid for 12 months). Avoid freeze/thaw cycles.
Shipping	Ice bags
Buffer	Liquid in PBS containing 50% glycerol, 0.5% protective protein and 0.02% New type preservative N.
Purification	Affinity purification

Application

Dilution Ratio	WB 1:500-1:2000,IHC 1:100-1:300,ICC/IF 1:50-1:200,ELISA 1:20000-1:40000
Molecular Weight	36kDa

Antigen Information

Gene Name	AASDHPPT
Alternative Names	AASDHPPT; CGI-80; HAH-P; HSPC223; x0005; L-aminoadipate-semialdehyde dehydrogenase-phosphopantetheinyl transferase; 4'-phosphopantetheinyl transferase; Alpha-aminoadipic semialdehyde dehydrogenase-phosphopantetheinyl transferase; AASD-PPT;
Gene ID	60496.0
SwissProt ID	Q9NRN7
Immunogen	The antiserum was produced against synthesized peptide derived from human AASDHPPT. AA range:11-60

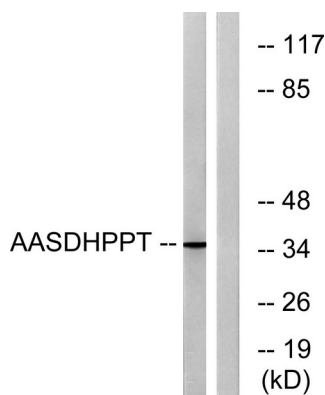
Background

The protein encoded by this gene is similar to *Saccharomyces cerevisiae* LYS5, which is required for the activation of the alpha-amino adipate dehydrogenase in the biosynthetic pathway of lysine. Yeast alpha-amino adipate dehydrogenase converts alpha-biosynthetic-amino adipate semialdehyde to alpha-amino adipate. It has been suggested that defects in the human gene result in pipecolic acidemia. [provided by RefSeq, Jul 2008], catalytic activity: CoA-[4'-phosphopantetheine] + apo-[acyl-carrier-protein] = adenosine 3',5'-bisphosphate + holo-[acyl-carrier-protein], cofactor: Binds 1 magnesium ion., function: Catalyzes the post-translational modification of target proteins by phosphopantetheine. Can transfer the 4'-phosphopantetheine moiety from coenzyme A to a serine residue of a broad range of acceptors, such as the acyl carrier domain of FASN., PTM: Phosphorylated upon DNA damage, probably by ATM or ATR., similarity: Belongs to the P-Pant transferase superfamily. AcpS family., subunit: Monomer. Interacts with FASN., tissue specificity: Detected in heart, skeletal muscle, placenta, testis, brain, pancreas, liver and kidney.,

Research Area

Lysine biosynthesis; Lysine degradation;

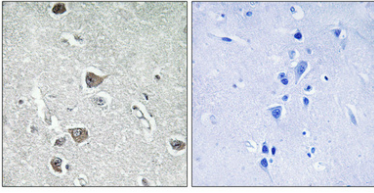
Image Data



Western blot analysis of lysates from COLO cells, using AASDHPPT Antibody. The lane on the right is blocked with the synthesized peptide.



Western Blot analysis of various cells using AASD-PPT Polyclonal Antibody



Immunohistochemical analysis of paraffin-embedded Human brain. Antibody was diluted at 1:100 (4°, overnight) . High-pressure and temperature Tris-EDTA, pH8.0 was used for antigen retrieval. Negative control (right) obtained from antibody was pre-absorbed by immunogen peptide.