
Product Name: A Cyclase VIII Rabbit Polyclonal Antibody**Catalog #: APRab06358**

For research use only.

Summary

Description	Rabbit polyclonal Antibody
Host	Rabbit
Application	IHC,ICC/IF,ELISA
Reactivity	Human,Mouse,Rat
Conjugation	Unconjugated
Modification	Unmodified
Isotype	IgG
Clonality	Polyclonal
Form	Liquid
Concentration	1mg/ml
Storage	Aliquot and store at -20°C (valid for 12 months). Avoid freeze/thaw cycles.
Shipping	Ice bags
Buffer	Liquid in PBS containing 50% glycerol, 0.5% protective protein and 0.02% New type preservative N.
Purification	Affinity purification

Application

Dilution Ratio IHC 1:100-1:300,ICC/IF 1:200-1:1000,ELISA 1:20000-1:40000

Molecular Weight

Antigen Information

Gene Name	ADCY8
Alternative Names	ADCY8; Adenylate cyclase type 8; ATP pyrophosphate-lyase 8; Adenylate cyclase type VIII; Adenylyl cyclase 8; AC8; Ca(2+)/calmodulin-activated adenylyl cyclase
Gene ID	114.0
SwissProt ID	P40145
Immunogen	The antiserum was produced against synthesized peptide derived from human ADCY8. AA range:591-640

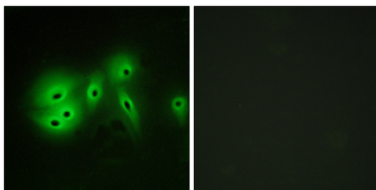
Background

Adenylate cyclase is a membrane bound enzyme that catalyses the formation of cyclic AMP from ATP. The enzymatic activity is under the control of several hormones, and different polypeptides participate in the transduction of the signal from the receptor to the catalytic moiety. Stimulatory or inhibitory receptors (Rs and Ri) interact with G proteins (Gs and Gi) that exhibit GTPase activity and they modulate the activity of the catalytic subunit of the adenylyl cyclase [provided by RefSeq, Jul 2008], catalytic activity: ATP = 3',5'-cyclic AMP + diphosphate., cofactor: Binds 2 magnesium ions per subunit., enzyme regulation: Activated by calcium/calmodulin., function: This is a membrane-bound, calcium-stimulable adenylyl cyclase. May be involved in learning, in memory and in drug dependence., similarity: Belongs to the adenylyl cyclase class-4/guanylyl cyclase family., similarity: Contains 2 guanylate cyclase domains.,

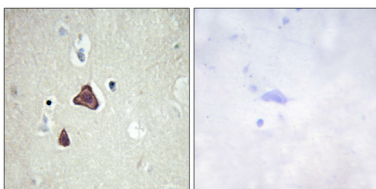
Research Area

Purine metabolism; Calcium; Chemokine; Oocyte meiosis; Vascular smooth muscle contraction; Gap junction; Long-term potentiation; Taste transduction; GnRH; Progesterone-mediated oocyte maturation; Melanogenesis; Dilated cardiomyopathy;

Image Data



Immunofluorescence analysis of A549 cells, using ADCY8 Antibody. The picture on the right is blocked with the synthesized peptide.



Immunohistochemistry analysis of paraffin-embedded human brain tissue, using ADCY8 Antibody. The picture on the right is blocked with the synthesized peptide.