
Product Name: A Cyclase I Rabbit Polyclonal Antibody**Catalog #: APRab06352**

For research use only.

Summary

Description	Rabbit polyclonal Antibody
Host	Rabbit
Application	WB,IHC,ICC/IF,ELISA
Reactivity	Human,Mouse
Conjugation	Unconjugated
Modification	Unmodified
Isotype	IgG
Clonality	Polyclonal
Form	Liquid
Concentration	1mg/ml
Storage	Aliquot and store at -20°C (valid for 12 months). Avoid freeze/thaw cycles.
Shipping	Ice bags
Buffer	Liquid in PBS containing 50% glycerol, 0.5% protective protein and 0.02% New type preservative N.
Purification	Affinity purification

Application

Dilution Ratio	WB 1:500-1:2000,IHC 1:100-1:300,ICC/IF 1:50-1:200,ELISA 1:20000-1:40000
Molecular Weight	130kDa

Antigen Information

Gene Name	ADCY1
Alternative Names	ADCY1; Adenylate cyclase type 1; ATP pyrophosphate-lyase 1; Adenylate cyclase type I; Adenylyl cyclase 1; Ca(2+)/calmodulin-activated adenylyl cyclase
Gene ID	107.0
SwissProt ID	Q08828
Immunogen	The antiserum was produced against synthesized peptide derived from human ADCY1. AA range:231-280

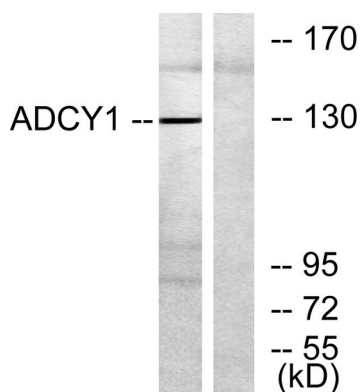
Background

This gene encodes a member of the of adenylate cyclase gene family that is primarily expressed in the brain. This protein is regulated by calcium/calmodulin concentration and may be involved in brain development. Alternate splicing results in multiple transcript variants. [provided by RefSeq, Aug 2013],catalytic activity:ATP = 3',5'-cyclic AMP + diphosphate.,cofactor:Binds 2 magnesium ions per subunit.,enzyme regulation:Activated by calcium/calmodulin. Inhibited by the G protein beta and gamma subunit complex.,function:This is a calmodulin-sensitive adenylyl cyclase. May be involved in regulatory processes in the central nervous system. It may play a role in memory acquisition and learning.,similarity:Belongs to the adenylyl cyclase class-4/guanylyl cyclase family.,similarity:Contains 2 guanylate cyclase domains.,tissue specificity:Brain, retina and adrenal medulla.,

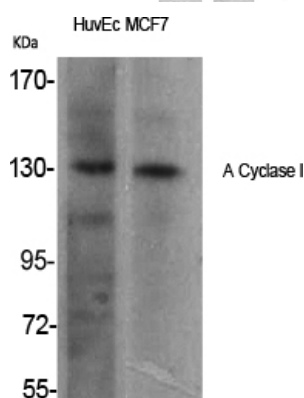
Research Area

Purine metabolism;Calcium;Chemokine;Oocyte meiosis;Vascular smooth muscle contraction;Gap junction;Long-term potentiation;GnRH;Progesterone-mediated oocyte maturation;Melanogenesis;Dilated cardiomyopathy;

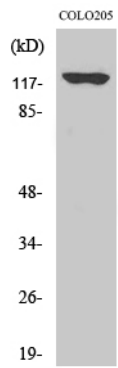
Image Data



Western blot analysis of lysates from COLO205 cells, using ADCY1 Antibody. The lane on the right is blocked with the synthesized peptide.



Western Blot analysis of various cells using A Cyclase I Polyclonal Antibody



Western Blot analysis of COLO205 cells using A Cyclase I Polyclonal Antibody