

---

**Product Name: 14-3-3 ζ Rabbit Polyclonal Antibody****Catalog #: APRab06282**

For research use only.

**Summary**

<b>Description</b>	Rabbit polyclonal Antibody
<b>Host</b>	Rabbit
<b>Application</b>	WB,IHC,ICC/IF,ELISA,IP
<b>Reactivity</b>	Human,Mouse,Rat
<b>Conjugation</b>	Unconjugated
<b>Modification</b>	Unmodified
<b>Isotype</b>	IgG
<b>Clonality</b>	Polyclonal
<b>Form</b>	Liquid
<b>Concentration</b>	1mg/ml
<b>Storage</b>	Aliquot and store at -20°C (valid for 12 months). Avoid freeze/thaw cycles.
<b>Shipping</b>	Ice bags
<b>Buffer</b>	Liquid in PBS containing 50% glycerol, 0.5% protective protein and 0.02% New type preservative N.
<b>Purification</b>	Affinity purification

**Application**

**Dilution Ratio** WB 1:500-1:2000,IHC 1:100-1:300,ICC/IF 1:200-1:1000,ELISA 1:20000-1:40000,IP 1:20-1:50

**Molecular Weight**

**Antigen Information**

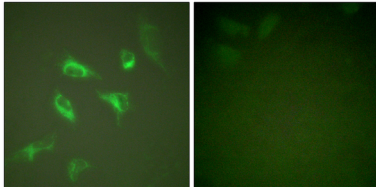
<b>Gene Name</b>	YWHAZ
<b>Alternative Names</b>	YWHAZ; 14-3-3 protein zeta/delta; Protein kinase C inhibitor protein 1; KCIP-1
<b>Gene ID</b>	7534.0
<b>SwissProt ID</b>	P63104
<b>Immunogen</b>	The antiserum was produced against synthesized peptide derived from human 14-3-3 zeta. AA range:24-73

**Background**

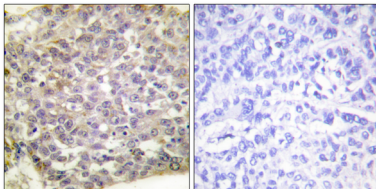
## Research Area

Cell\_Cycle\_G1S;Cell\_Cycle\_G2M\_DNA;Oocyte meiosis;Neurotrophin;Pathogenic Escherichia coli infection;

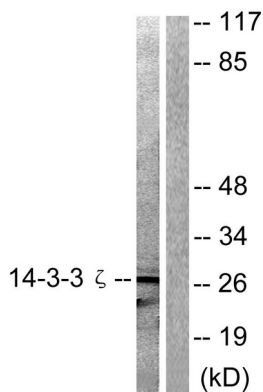
## Image Data



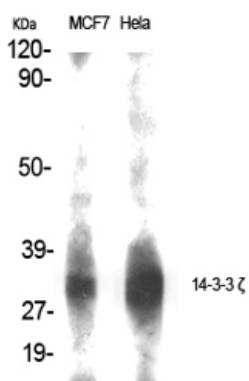
Immunofluorescence analysis of HeLa cells, using 14-3-3 zeta Antibody. The picture on the right is blocked with the synthesized peptide.



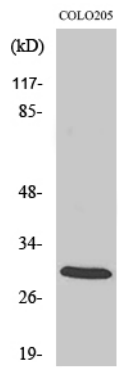
Immunohistochemistry analysis of paraffin-embedded human breast carcinoma tissue, using 14-3-3 zeta Antibody. The picture on the right is blocked with the synthesized peptide.



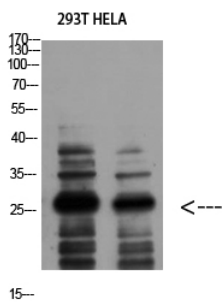
Western blot analysis of lysates from 293 cells, treated with Forskolin 40nM 30', using 14-3-3 zeta Antibody. The lane on the right is blocked with the synthesized peptide.



Western Blot analysis of various cells using 14-3-3  $\zeta$  Polyclonal Antibody diluted at 1 : 1000



Western Blot analysis of COLO205 cells using 14-3-3  $\zeta$  Polyclonal Antibody diluted at 1: 1000



Western Blot analysis of 293T HELA using 14-3-3  $\zeta$  Polyclonal Antibody diluted at 1:1000. Secondary antibody was diluted at 1:20000