
Product Name: 14-3-3 ϵ Rabbit Polyclonal Antibody**Catalog #: APRab06281**

For research use only.

Summary

Description	Rabbit polyclonal Antibody
Host	Rabbit
Application	WB,IHC,ICC/IF,ELISA
Reactivity	Human,Mouse,Rat
Conjugation	Unconjugated
Modification	Unmodified
Isotype	IgG
Clonality	Polyclonal
Form	Liquid
Concentration	1mg/ml
Storage	Aliquot and store at -20°C (valid for 12 months). Avoid freeze/thaw cycles.
Shipping	Ice bags
Buffer	Liquid in PBS containing 50% glycerol, 0.5% protective protein and 0.02% New type preservative N.
Purification	Affinity purification

Application

Dilution Ratio WB 1:500-1:2000,IHC 1:100-1:300,ICC/IF 1:200-1:1000,ELISA 1:10000-1:20000

Molecular Weight

Antigen Information

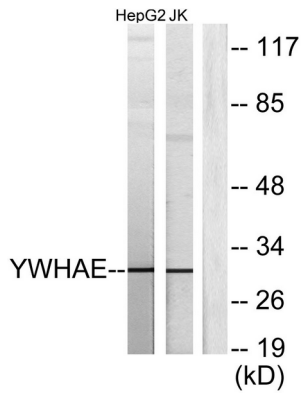
Gene Name	YWHAE
Alternative Names	YWHAE; 14-3-3 protein epsilon; 14-3-3E
Gene ID	7531.0
SwissProt ID	P62258
Immunogen	The antiserum was produced against synthesized peptide derived from human 14-3-3 epsilon. AA range:206-255

Background

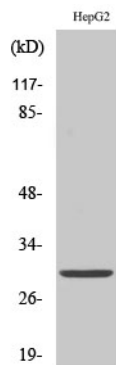
Research Area

Neuroscience

Image Data



Western blot analysis of lysates from HepG2 and Jurkat cells, using 14-3-3 epsilon Antibody. The lane on the right is blocked with the synthesized peptide.



Western Blot analysis of various cells using 14-3-3 ε Polyclonal Antibody diluted at 1 : 1000