
Product Name: 14-3-3 γ Rabbit Polyclonal Antibody**Catalog #: APRab06280**

For research use only.

Summary

| | |
|----------------------|---|
| Description | Rabbit polyclonal Antibody |
| Host | Rabbit |
| Application | WB,IHC,ICC/IF,ELISA |
| Reactivity | Human,Mouse,Rat |
| Conjugation | Unconjugated |
| Modification | Unmodified |
| Isotype | IgG |
| Clonality | Polyclonal |
| Form | Liquid |
| Concentration | 1mg/ml |
| Storage | Aliquot and store at -20°C (valid for 12 months). Avoid freeze/thaw cycles. |
| Shipping | Ice bags |
| Buffer | Liquid in PBS containing 50% glycerol, 0.5% protective protein and 0.02% New type preservative N. |
| Purification | Affinity purification |

Application

Dilution Ratio WB 1:500-1:2000,IHC 1:100-1:300,ICC/IF 1:200-1:1000,ELISA 1:5000-1:20000

Molecular Weight

Antigen Information

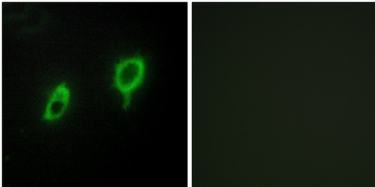
| | |
|--------------------------|---|
| Gene Name | YWHAG |
| Alternative Names | YWHAG; 14-3-3 protein gamma; Protein kinase C inhibitor protein 1; KCIP-1 |
| Gene ID | 7532.0 |
| SwissProt ID | P61981 |
| Immunogen | The antiserum was produced against synthesized peptide derived from human 14-3-3 gamma. AA range:51-100 |

Background

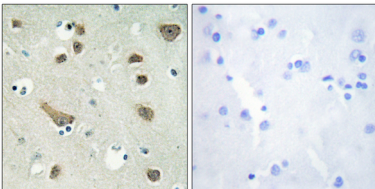
Research Area

Neuroscience

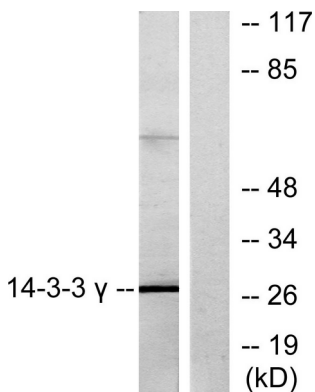
Image Data



Immunofluorescence analysis of COS7 cells, using 14-3-3 gamma Antibody. The picture on the right is blocked with the synthesized peptide.



Immunohistochemistry analysis of paraffin-embedded human brain tissue, using 14-3-3 gamma Antibody. The picture on the right is blocked with the synthesized peptide.



Western blot analysis of lysates from K562 cells, treated with insulin 0.01U/ml 15', using 14-3-3 gamma Antibody. The lane on the right is blocked with the synthesized peptide.