

**Product Name: 14-3-3  $\beta/\zeta$  Rabbit Polyclonal Antibody****Catalog #: APRab06279**

For research use only.

**Summary**

<b>Description</b>	Rabbit polyclonal Antibody
<b>Host</b>	Rabbit
<b>Application</b>	WB,ELISA
<b>Reactivity</b>	Human,Mouse,Rat
<b>Conjugation</b>	Unconjugated
<b>Modification</b>	Unmodified
<b>Isotype</b>	IgG
<b>Clonality</b>	Polyclonal
<b>Form</b>	Liquid
<b>Concentration</b>	1mg/ml
<b>Storage</b>	Aliquot and store at -20°C (valid for 12 months). Avoid freeze/thaw cycles.
<b>Shipping</b>	Ice bags
<b>Buffer</b>	Liquid in PBS containing 50% glycerol, 0.5% protective protein and 0.02% New type preservative N.
<b>Purification</b>	Affinity purification

**Application**

**Dilution Ratio** WB 1:500-1:2000,ELISA 1:10000-1:20000

**Molecular Weight**

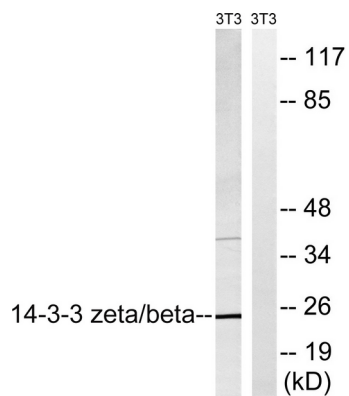
**Antigen Information**

<b>Gene Name</b>	YWHAB/YWHAZ
<b>Alternative Names</b>	YWHAZ; 14-3-3 protein zeta/delta; Protein kinase C inhibitor protein 1; KCIP-1; YWHAB; 14-3-3 protein beta/alpha; Protein 1054; Protein kinase C inhibitor protein 1; KCIP-1
<b>Gene ID</b>	7534/7529
<b>SwissProt ID</b>	P63104/P31946
<b>Immunogen</b>	The antiserum was produced against synthesized peptide derived from human YWHAZ. AA range:151-200

**Background**

## Research Area

## Image Data



Western blot analysis of lysates from NIH/3T3 cells, using 14-3-3 beta/zeta Antibody. The lane on the right is blocked with the synthesized peptide.