
Product Name: Tau (Acetyl Lys174) Rabbit Polyclonal Antibody**Catalog #: APRab06261**

For research use only.

Summary

Description	Rabbit polyclonal Antibody
Host	Rabbit
Application	WB,ICC/IF,ELISA
Reactivity	Human,Rat,Mouse
Conjugation	Unconjugated
Modification	Acetylated
Isotype	IgG
Clonality	Polyclonal
Form	Liquid
Concentration	1mg/ml
Storage	Aliquot and store at -20°C (valid for 12 months). Avoid freeze/thaw cycles.
Shipping	Ice bags
Buffer	Liquid in PBS containing 50% glycerol, 0.5% protective protein and 0.02% New type preservative N.
Purification	Affinity purification

Application

Dilution Ratio	WB 1:500-1:2000,ICC/IF 1:100-1:500,ELISA 1:5000-1:20000
Molecular Weight	50-85kDa

Antigen Information

Gene Name	MAPT MAPTL MTBT1 TAU
Alternative Names	Microtubule-associated protein tau (Neurofibrillary tangle protein) (Paired helical filament-tau) (PHF-tau)
Gene ID	4137.0
SwissProt ID	P10636
Immunogen	Synthetic Acetyl peptide from human protein at AA range: 174

Background

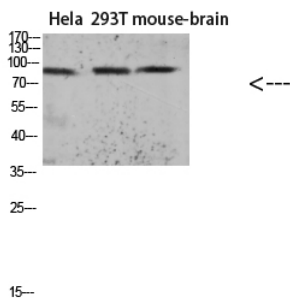
This gene encodes the microtubule-associated protein tau (MAPT) whose transcript undergoes complex, regulated alternative

splicing, giving rise to several mRNA species. MAPT transcripts are differentially expressed in the nervous system, depending on stage of neuronal maturation and neuron type. MAPT gene mutations have been associated with several neurodegenerative disorders such as Alzheimer's disease, Pick's disease, frontotemporal dementia, cortico-basal degeneration and progressive supranuclear palsy. [provided by RefSeq, Jul 2008],alternative products:Additional isoforms seem to exist. Isoforms differ from each other by the presence or absence of up to 5 of the 15 exons.

Research Area

MAPK_ERK_Growth;MAPK_G_Protein;Alzheimer's disease;

Image Data



Western blot analysis of KB Hela lysate, antibody was diluted at 1000. Secondary antibody was diluted at 1:20000