
Product Name: Acetyl-Rb (Acetyl-K873/K874) Rabbit Polyclonal Antibody**Catalog #: APRab06252**

For research use only.

Summary

Description	Rabbit polyclonal Antibody
Host	Rabbit
Application	WB,IHC
Reactivity	Human,Mouse,Rat
Conjugation	Unconjugated
Modification	Acetylated
Isotype	IgG
Clonality	Polyclonal
Form	Liquid
Concentration	1mg/ml
Storage	Aliquot and store at -20°C (valid for 12 months). Avoid freeze/thaw cycles.
Shipping	Ice bags
Buffer	Liquid in PBS containing 50% glycerol, 0.5% protective protein and 0.02% New type preservative N.
Purification	Affinity purification

Application**Dilution Ratio** WB 1:500-1:2000,IHC 1:50-1:300**Molecular Weight****Antigen Information**

Gene Name	RB1
Alternative Names	Retinoblastoma-associated protein (p105-Rb) (pRb) (Rb) (pp110)
Gene ID	5925.0
SwissProt ID	P06400
Immunogen	Synthesized Acetyl peptide derived from human Rb. at AA range: K873/872

Background

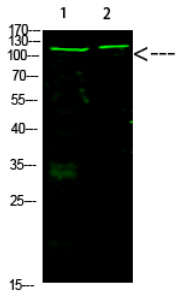
The protein encoded by this gene is a negative regulator of the cell cycle and was the first tumor suppressor gene found. The encoded protein also stabilizes constitutive heterochromatin to maintain the overall chromatin structure. The active,

hypophosphorylated form of the protein binds transcription factor E2F1. Defects in this gene are a cause of childhood cancer retinoblastoma (RB), bladder cancer, and osteogenic sarcoma. [provided by RefSeq, Jul 2008],disease:Defects in RB1 are a cause of bladder cancer [MIM:109800],disease:Defects in RB1 are a cause of osteogenic sarcoma [MIM:259500],disease:Defects in RB1 are the cause of childhood cancer retinoblastoma (RB) [MIM:180200]. RB is a congenital malignant tumor that arises from the nuclear layers of the retina. It occurs in about 1:20'000 live births and represents about 2% of childhood malignancies. It is bilateral in about 30% of cases. Although most RB appear sporadically, about 20% are transmitted as an autosomal dominant trait with incomplete penetrance. The diagnosis is usually made before the age of 2 years when strabismus or a gray to yellow reflex from pupil ("cat eye") is investigated.,function:Key regulator of entry into cell division that acts as a tumor suppressor. Acts as a transcription repressor of E2F1 target genes. The underphosphorylated, active form of RB1 interacts with E2F1 and represses its transcription activity, leading to cell cycle arrest. Directly involved in heterochromatin formation by maintaining overall chromatin structure and, in particular, that of constitutive heterochromatin by stabilizing histone methylation. Recruits and targets histone methyltransferases SUV39H1, SUV420H1 and SUV420H2, leading to epigenetic transcriptional repression. Controls histone H4 'Lys-20' trimethylation. Inhibits the intrinsic kinase activity of TAF1. In case of viral infections, interactions with SV40 large T antigen, HPV E7 protein or adenovirus E1A protein induce the disassembly of RB1-E2F1 complex thereby disrupting RB1's activity.,online information:RB1 mutation db,online information:Retinoblastoma protein entry,PTM:Phosphorylated in G1, thereby releasing E2F1 which is then able to activate cell growth. Dephosphorylated at the late M phase. SV40 large T antigen, HPV E7 and adenovirus E1A bind to the underphosphorylated, active form of pRb.,similarity:Belongs to the retinoblastoma protein (RB) family.,subunit:Interacts with ATAD5 (By similarity). The hypophosphorylated form interacts with and sequesters the E2F1 transcription factor. The unphosphorylated form interacts with ARID3B, KDM5A, SUV39H1, MJD2A/JHDM3A and THOC1. Interacts with the N-terminal domain of TAF1. Interacts with AATF, DNMT1, LIN9, LMNA, SUV420H1, SUV420H2, PELP1 and TMPO-alpha. May interact with NDC80. Interacts with EID1 and UBR4. Interacts with ARID4A and KDM5B. Interacts with E4F1. Interacts with adenovirus E1A protein, HPV E7 protein and SV40 large T antigen.,tissue specificity:Expressed in the retina.,

Research Area

Cell_Cycle_G1S;Cell_Cycle_G2M_DNA;Pathways in cancer;Pancreatic cancer;Glioma;Prostate cancer;Melanoma;Bladder cancer;Chronic myeloid leukemia;Small cell lung cancer;Non-small cell lung cancer;

Image Data



Western Blot analysis of 1,mouse-heart 3,mouse-brain cells using Rb (Acetyl-K873/K874) Rabbit Polyclonal Antibody diluted at 1:1000 (4°C overnight) .
Secondary antibody: Goat Anti-rabbit IgG IRDye 800 (diluted at 1:5000, 25°C, 1 hour)