

**Product Name: p53 (Acetyl Lys320) Rabbit Polyclonal Antibody****Catalog #: APRab06238**

For research use only.

**Summary**

<b>Description</b>	Rabbit polyclonal Antibody
<b>Host</b>	Rabbit
<b>Application</b>	WB,ELISA
<b>Reactivity</b>	Human,Rat,Mouse
<b>Conjugation</b>	Unconjugated
<b>Modification</b>	Acetylated
<b>Isotype</b>	IgG
<b>Clonality</b>	Polyclonal
<b>Form</b>	Liquid
<b>Concentration</b>	1mg/ml
<b>Storage</b>	Aliquot and store at -20°C (valid for 12 months). Avoid freeze/thaw cycles.
<b>Shipping</b>	Ice bags
<b>Buffer</b>	Liquid in PBS containing 50% glycerol, 0.5% protective protein and 0.02% New type preservative N.
<b>Purification</b>	Affinity purification

**Application**

<b>Dilution Ratio</b>	WB 1:500-1:2000,ELISA 1:10000-1:20000
<b>Molecular Weight</b>	53kDa

**Antigen Information**

<b>Gene Name</b>	TP53
<b>Alternative Names</b>	TP53; P53; Cellular tumor antigen p53; Antigen NY-CO-13; Phosphoprotein p53; Tumor suppressor p53
<b>Gene ID</b>	7157.0
<b>SwissProt ID</b>	P04637
<b>Immunogen</b>	Synthesized acetyl-peptide derived from the human p53 around the acetylation site of K320.

**Background**

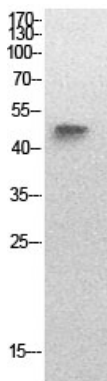
Tumor protein p53, a nuclear protein, plays an essential role in the regulation of cell cycle, specifically in the transition from G0

to G1. It is found in very low levels in normal cells, however, in a variety of transformed cell lines, it is expressed in high amounts, and believed to contribute to transformation and malignancy. p53 is a DNA-binding protein containing DNA-binding, oligomerization and transcription activation domains.

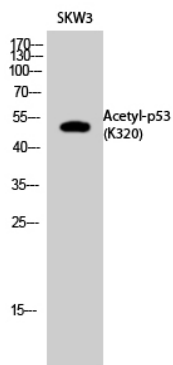
## Research Area

MAPK\_ERK\_Growth;MAPK\_G\_Protein;Cell\_Cycle\_G1S;Cell\_Cycle\_G2M\_DNA;p53;Apoptosis\_Inhibition;Apoptosis\_Mitochondrial;Apoptosis\_Overview;WNT;WNT-T CELLNeurotrophin;Amyotrophic lateral sclerosis (ALS);Huntington's disease;Pathways in cancer;Colorectal cancer;Pancreatic cancer;Endometrial cancer;Glioma;Prostate cancer;Thyroid cancer;Basal cell carcinoma;Melanoma;Bladder cancer;Chronic myeloid leukemia;Small cell lung cancer;Non-small cell lung cancer;

## Image Data



Western Blot analysis of SKW3 cells using Acetyl-p53 (K320) Polyclonal Antibody..  
Secondary antibody was diluted at 1:20000



Western Blot analysis of SKW3 cells using Acetyl-p53 (K320) Polyclonal Antibody.  
Secondary antibody was diluted at 1:20000