

---

**Product Name: Histone H3 (Acetyl Lys18) Rabbit Polyclonal Antibody****Catalog #: APRab06203**

For research use only.

**Summary**

<b>Description</b>	Rabbit polyclonal Antibody
<b>Host</b>	Rabbit
<b>Application</b>	WB,IHC,ICC/IF,ELISA
<b>Reactivity</b>	Human,Mouse,Rat
<b>Conjugation</b>	Unconjugated
<b>Modification</b>	Acetylated
<b>Isotype</b>	IgG
<b>Clonality</b>	Polyclonal
<b>Form</b>	Liquid
<b>Concentration</b>	1mg/ml
<b>Storage</b>	Aliquot and store at -20°C (valid for 12 months). Avoid freeze/thaw cycles.
<b>Shipping</b>	Ice bags
<b>Buffer</b>	Liquid in PBS containing 50% glycerol, 0.5% protective protein and 0.02% New type preservative N.
<b>Purification</b>	Affinity purification

**Application**

<b>Dilution Ratio</b>	WB 1:500-1:2000,IHC 1:100-1:300,ICC/IF 1:200-1:1000,ELISA 1:5000-1:10000
<b>Molecular Weight</b>	17kDa

**Antigen Information**

<b>Gene Name</b>	HIST1H3A HIST1H3A; H3FA; HIST1H3B; H3FL; HIST1H3C; H3FC; HIST1H3D; H3FB; HIST1H3E; H3FD;
<b>Alternative Names</b>	HIST1H3F; H3FI; HIST1H3G; H3FH; HIST1H3H; H3FK; HIST1H3I; H3FF; HIST1H3J; H3FJ; Histone H3.1; Histone H3/a; Histone H3/b; Histone H3/c; Histone H3/d; Histone H3;H3k18AC
<b>Gene ID</b>	8350/8351/8352/8353/8354/8355/8356/8357/8358/8968/126961/333932/653604/3020/3021
<b>SwissProt ID</b>	P68431/Q71DI3/P84243
<b>Immunogen</b>	The antiserum was produced against synthesized peptide derived from human Histone H3 around the acetylated site of Lys18. AA range:1-50

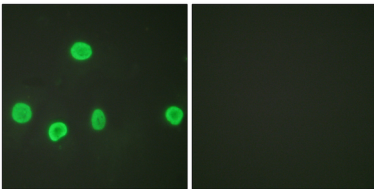
## Background

H3 Core component of nucleosome. Nucleosomes wrap and compact DNA into chromatin, limiting DNA accessibility to the cellular machineries which require DNA as a template. Histones thereby play a central role in transcription regulation, DNA repair, DNA replication and chromosomal stability.

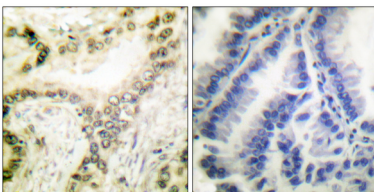
## Research Area

Protein\_Acetylation

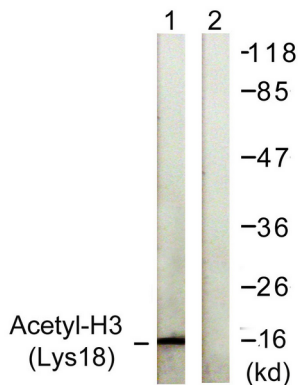
## Image Data



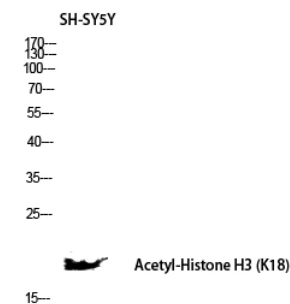
Immunofluorescence analysis of HeLa cells, using Histone H3 (Acetyl-Lys18) Antibody. The picture on the right is blocked with the synthesized peptide.



Immunohistochemistry analysis of paraffin-embedded human lung carcinoma tissue, using Histone H3 (Acetyl-Lys18) Antibody. The picture on the right is blocked with the synthesized peptide.



Western blot analysis of lysates from HeLa cells, treated with TSA 400nM 24h, using Histone H3 (Acetyl-Lys18) Antibody. The lane on the right is blocked with the synthesized peptide.



Western blot analysis of SH-SY5Y lysis using Acetyl-Histone H3 (K18) antibody. Antibody was diluted at 1:1000. Secondary antibody was diluted at 1:20000

