

Product Name: Cytokeratin-pan (Acetyl Lys194) Rabbit Polyclonal Antibody**Catalog #: APRab06181**

For research use only.

Summary

Description	Rabbit polyclonal Antibody
Host	Rabbit
Application	WB,ELISA
Reactivity	Human,Mouse,Rat
Conjugation	Unconjugated
Modification	Acetylated
Isotype	IgG
Clonality	Polyclonal
Form	Liquid
Concentration	1mg/ml
Storage	Aliquot and store at -20°C (valid for 12 months). Avoid freeze/thaw cycles.
Shipping	Ice bags
Buffer	Liquid in PBS containing 50% glycerol, 0.5% protective protein and 0.02% New type preservative N.
Purification	Affinity purification

Application

Dilution Ratio	WB 1:500-1:2000,ELISA 1:10000-1:20000
Molecular Weight	65kDa

Antigen Information

Gene Name	KRT2/KRT76/KRT3/KRT5/KRT6A/KRT6B/KRT6C/KRT71/KRT72/KRT73/KRT74/KRT75/ KRT79/KRT8/KRT84
Alternative Names	KRT2; KRT2A; KRT2E; Keratin, type II cytoskeletal 2 epidermal; Cytokeratin-2e; CK-2e; Epithelial keratin-2e; Keratin-2 epidermis; Keratin-2e; K2e; Type-II keratin Kb2; KRT76; KRT2B; KRT2P; Keratin, type II cytoskeletal 2 oral; Cytokeratin-2PCK-2P; K2P; Keratin-76; K76; Type-II keratin Kb9; KRT3; Keratin, type II cytoskeletal 3; 65 kDa cytotkeratin; Cytokeratin-3; CK-3; Keratin-3; K3; Type-II keratin Kb3; KRT5; Keratin, type II cytoskeletal 5; 58 kDa cytotkeratin; Cytokeratin-5; CK-5; Keratin-5
Gene ID	3849/51350/3850/3852/3853/3854/286887/112802/140807/319101/121391/9119/338785/

	3856/3890
SwissProt ID	P35908/Q01546/P12035/P13647/P02538/P04259/P48668/Q3SY84/Q14CN4/Q86Y46/ Q7RTS7/O95678/Q5XKE5/P08729/P05787/Q9NSB2
Immunogen	The antiserum was produced against synthesized Acetyl-peptide derived from human Keratin-pan around the Acetylation site of Lys194. AA range:151-200

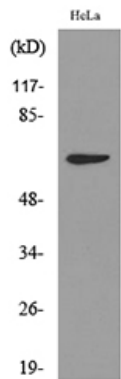
Background

keratin 2(KRT2) Homo sapiens The protein encoded by this gene is a member of the keratin gene family. The type II cytokeratins consist of basic or neutral proteins which are arranged in pairs of heterotypic keratin chains coexpressed during differentiation of simple and stratified epithelial tissues. This type II cytokeratin is expressed largely in the upper spinous layer of epidermal keratinocytes and mutations in this gene have been associated with bullous congenital ichthyosiform erythroderma. The type II cytokeratins are clustered in a region of chromosome 12q12-q13. [provided by RefSeq, Jul 2008],developmental stage:Synthesized during maturation of epidermal keratinocytes and localized in the upper intermediate cells of fetal skin. Earliest expression is at 10 weeks in the developing embryo in the presumptive nail bed of developing digits, shifting to the proximal nail fold by 13.5 weeks. At 12.5 weeks, detected in scattered cells of the intermediate layer of trunk skin. At 19.3 weeks, regional expression patterns were observed in upper intermediate keratinocytes of cheek, trunk, dorsal and ventral knee, elbow and dorsal hand. Distal areas around the periumbilical region showed increased number of positive cells and by 15 weeks is expressed in small groups of cells in the fetal hair follicles.,disease:Defects in KRT2 are a cause of ichthyosis bullosa of Siemens (IBS) [MIM:146800]. IBS is a rare autosomal dominant skin disorder displaying a type of epidermolytic hyperkeratosis characterized by generalized erythema and extensive blistering from birth. Large, dark gray hyperkeratoses are observed in later weeks. The skin of IBS patients is unusually fragile and has a tendency to shed the outer layers of the epidermis, producing localized denuded areas (molting effect). IBS usually improves with age so that in most middle-aged patients the hyperkeratosis and keratotic lichenification is limited to the flexural folds of the major joints.,function:Probably contributes to terminal cornification. Associated with keratinocyte activation, proliferation and keratinization.,miscellaneous:There are two types of cytoskeletal and microfibrillar keratin: I (acidic; 40-55 kDa) and II (neutral to basic; 56-70 kDa),online information:Keratin-2A entry,similarity:Belongs to the intermediate filament family.,subunit:Heterotetramer of two type I and two type II keratins. Associates with KRT10.,tissue specificity:Expressed in the upper spinous and granular suprabasal layers of normal adult epidermal tissues from most body sites including thigh, breast nipple, foot sole, penile shaft and axilla. Not present in foreskin, squamous metaplasias and carcinomas. Expression in hypertrophic and keloid scars begins in the deepest suprabasal layer. Weakly expressed in normal gingiva and tongue, however expression is induced in benign keratoses of lingual mucosa and in mild-to-moderate oral dysplasia with orthokeratinization.,

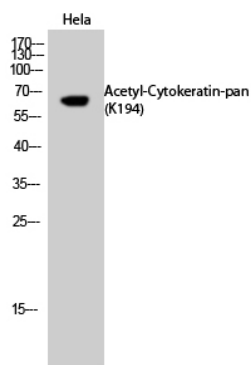
Research Area

Signal Transduction

Image Data



Western blot analysis of lysate from HeLa cells, using Keratin-pan (Acetyl-Lys194) Antibody.



Western Blot analysis of HeLa cells using Acetyl-Cytokeratin-pan (K194) Polyclonal Antibody.. Secondary antibody was diluted at 1:20000