

---

**Product Name: PDE3A (Phospho-Ser312) Rabbit Polyclonal Antibody****Catalog #: APRab05834**

For research use only.

**Summary**

<b>Description</b>	Rabbit polyclonal Antibody
<b>Host</b>	Rabbit
<b>Application</b>	WB
<b>Reactivity</b>	Human,Mouse,Rat
<b>Conjugation</b>	Unconjugated
<b>Modification</b>	Phosphorylated
<b>Isotype</b>	IgG
<b>Clonality</b>	Polyclonal
<b>Form</b>	Liquid
<b>Concentration</b>	1mg/ml
<b>Storage</b>	Aliquot and store at -20°C (valid for 12 months). Avoid freeze/thaw cycles.
<b>Shipping</b>	Ice bags
<b>Buffer</b>	Liquid in PBS containing 50% glycerol, 0.5% protective protein and 0.02% New type preservative N.
<b>Purification</b>	Affinity purification

**Application**

<b>Dilution Ratio</b>	WB 1:500-1:2000
<b>Molecular Weight</b>	126kDa

**Antigen Information**

<b>Gene Name</b>	PDE3A
<b>Alternative Names</b>	cGMP-inhibited 3',5'-cyclic phosphodiesterase A (EC 3.1.4.17) (Cyclic GMP-inhibited phosphodiesterase A) (CGI-PDE A)
<b>Gene ID</b>	5139.0
<b>SwissProt ID</b>	Q14432
<b>Immunogen</b>	Synthesized peptide derived from human PDE3A (Phospho-Ser312)

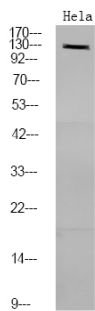
**Background**

catalytic activity:Nucleoside 3',5'-cyclic phosphate + H(2)O = nucleoside 5'-phosphate,enzyme regulation:Inhibited by

cGMP.,function:Hydrolyzes both cyclic AMP (cAMP) and cyclic GMP (cGMP),,online information:PDE3 entry,similarity:Belongs to the cyclic nucleotide phosphodiesterase family.,

## Research Area

## Image Data



Western Blot analysis of HeLa using primary antibody at 1:1000 dilution 4°C, overnight. Secondary antibody was diluted at 1:10000 25°C, 1.5hours