

**Product Name: Nuclear Receptor NR4A1 (Phospho-Ser351) Rabbit Polyclonal Antibody**  
**Catalog #: APRab05824**

For research use only.

## Summary

<b>Description</b>	Rabbit polyclonal Antibody
<b>Host</b>	Rabbit
<b>Application</b>	WB,ELISA
<b>Reactivity</b>	Human,Mouse,Rat
<b>Conjugation</b>	Unconjugated
<b>Modification</b>	Phosphorylated
<b>Isotype</b>	IgG
<b>Clonality</b>	Polyclonal
<b>Form</b>	Liquid
<b>Concentration</b>	1mg/ml
<b>Storage</b>	Aliquot and store at -20°C (valid for 12 months). Avoid freeze/thaw cycles.
<b>Shipping</b>	Ice bags
<b>Buffer</b>	Liquid in PBS containing 50% glycerol, 0.5% protective protein and 0.02% New type preservative N.
<b>Purification</b>	Affinity purification

## Application

<b>Dilution Ratio</b>	WB 1:500-1:2000,ELISA 1:5000-1:20000
<b>Molecular Weight</b>	77kDa

## Antigen Information

<b>Gene Name</b>	NR4A1 GFRP1 HMR NAK1 Nuclear receptor subfamily 4 group A member 1 (Early response protein NAK1;Nuclear
<b>Alternative Names</b>	hormone receptor NUR/77;Nur77;Orphan nuclear receptor HMR;Orphan nuclear receptor TR3;ST-59;Testicular receptor 3)
<b>Gene ID</b>	3164.0
<b>SwissProt ID</b>	P22736
<b>Immunogen</b>	Synthesized pospho peptide derived from human Nuclear Receptor NR4A1 (Phospho-Ser351)

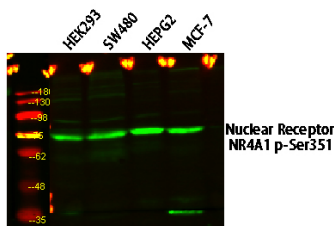
## Background

This gene encodes a member of the steroid-thyroid hormone-retinoid receptor superfamily. Expression is induced by phytohemagglutinin in human lymphocytes and by serum stimulation of arrested fibroblasts. The encoded protein acts as a nuclear transcription factor. Translocation of the protein from the nucleus to mitochondria induces apoptosis. Multiple transcript variants encoding different isoforms have been found for this gene. [provided by RefSeq, Jan 2011],function:Orphan nuclear receptor.,induction:By growth-stimulating agents.,similarity:Belongs to the nuclear hormone receptor family.,similarity:Belongs to the nuclear hormone receptor family. NR4 subfamily.,similarity:Contains 1 nuclear receptor DNA-binding domain.,subunit:Interacts with GADD45GIP1.,tissue specificity:Fetal muscle and adult liver, brain and thyroid.,

## Research Area

Tags & Cell Markers

## Image Data



Western blot analysis of various lysates, Nuclear Receptor NR4A1 (Phospho-Ser351) Rabbit Polyclonal Antibody was diluted at 1:1000, 4° over night, secondary antibody was diluted at 1:10000, 37° 1hour.