
Product Name: LAB (Phospho-Tyr136) Rabbit Polyclonal Antibody**Catalog #: APRab05788**

For research use only.

Summary

| | |
|----------------------|---|
| Description | Rabbit polyclonal Antibody |
| Host | Rabbit |
| Application | WB |
| Reactivity | Human, Mouse, Rat |
| Conjugation | Unconjugated |
| Modification | Phosphorylated |
| Isotype | IgG |
| Clonality | Polyclonal |
| Form | Liquid |
| Concentration | 1mg/ml |
| Storage | Aliquot and store at -20°C (valid for 12 months). Avoid freeze/thaw cycles. |
| Shipping | Ice bags |
| Buffer | Liquid in PBS containing 50% glycerol, 0.5% protective protein and 0.02% New type preservative N. |
| Purification | Affinity purification |

Application**Dilution Ratio** WB 1:500-1:2000**Molecular Weight****Antigen Information**

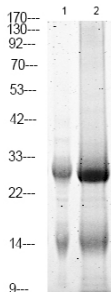
| | |
|--------------------------|--|
| Gene Name | LAT2 |
| Alternative Names | Linker for activation of T-cells family member 2 (Linker for activation of B-cells) (Membrane-associated adapter molecule) (Non-T-cell activation linker) (Williams-Beuren syndrome chromosomal region 15 protein) (Williams-Beuren syndrome chromosomal region 5 protein) |
| Gene ID | 7462.0 |
| SwissProt ID | Q9GZY6 |
| Immunogen | Synthesized peptide derived from human LAB (Phospho-Tyr136) |

Background

disease: Defects in LAT2 may be a cause of certain cardiovascular and musculo-skeletal abnormalities observed in Williams-Beuren syndrome (WBS) [MIM:194050]. WBS is a rare developmental disorder. It is a contiguous gene deletion syndrome involving genes from chromosome band 7q11.23., function: Involved in FCER1 (high affinity immunoglobulin epsilon receptor)-mediated signaling in mast cells. May also be involved in BCR (B-cell antigen receptor)-mediated signaling in B-cells and FCGR1 (high affinity immunoglobulin gamma Fc receptor I)-mediated signaling in myeloid cells. Couples activation of these receptors and their associated kinases with distal intracellular events through the recruitment of GRB2., PTM: May be polyubiquitinated., PTM: Phosphorylated on tyrosines following cross-linking of BCR in B-cells, FCGR1 in myeloid cells, or FCER1 in mast cells; which induces the recruitment of GRB2., subcellular location: Present in lipid rafts., subunit: When phosphorylated, interacts with GRB2. May also interact with SOS1, GAB1 and CBL., tissue specificity: Highly expressed in spleen, peripheral blood lymphocytes, and germinal centers of lymph nodes. Also expressed in placenta, lung, pancreas and small intestine. Present in B-cells, NK cells and monocytes. Absent from T-cells (at protein level),

Research Area

Image Data



Western Blot analysis of 1 HepG2 cell, 2 Serum-free treated , using primary antibody at 1:1000 dilution. Secondary antibody was diluted at 1:10000