
Product Name: GRK2 (Phospho-Tyr86) Rabbit Polyclonal Antibody**Catalog #: APRab05752**

For research use only.

Summary

Description	Rabbit polyclonal Antibody
Host	Rabbit
Application	WB,IHC,ICC/IF
Reactivity	Human,Mouse,Rat
Conjugation	Unconjugated
Modification	Phosphorylated
Isotype	IgG
Clonality	Polyclonal
Form	Liquid
Concentration	1mg/ml
Storage	Aliquot and store at -20°C (valid for 12 months). Avoid freeze/thaw cycles.
Shipping	Ice bags
Buffer	Liquid in PBS containing 50% glycerol, 0.5% protective protein and 0.02% New type preservative N.
Purification	Affinity purification

Application

Dilution Ratio	WB 1:500-1:2000,IHC 1:50-1:200,ICC/IF 1:50-1:200
Molecular Weight	75kDa

Antigen Information

Gene Name	ADRBK1 BARK BARK1 GRK2
Alternative Names	Beta-adrenergic receptor kinase 1 (Beta-ARK-1;EC 2.7.11.15;G-protein coupled receptor kinase 2)
Gene ID	156.0
SwissProt ID	P25098
Immunogen	Synthesized peptide derived from human GRK2 (Phospho-Tyr86)

Background

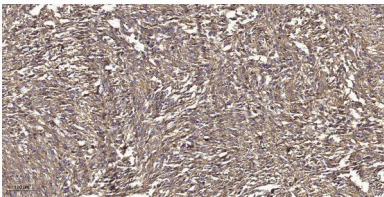
The product of this gene phosphorylates the beta-2-adrenergic receptor and appears to mediate agonist-specific

desensitization observed at high agonist concentrations. This protein is an ubiquitous cytosolic enzyme that specifically phosphorylates the activated form of the beta-adrenergic and related G-protein-coupled receptors. Abnormal coupling of beta-adrenergic receptor to G protein is involved in the pathogenesis of the failing heart. [provided by RefSeq, Jul 2008],catalytic activity:ATP + [beta-adrenergic receptor] = ADP + [beta-adrenergic receptor] phosphate.,catalytic activity:ATP + a protein = ADP + a phosphoprotein.,function:Specifically phosphorylates the agonist-occupied form of the beta-adrenergic and closely related receptors, probably inducing a desensitization of them.,online information:Beta adrenergic receptor kinase entry,similarity:Belongs to the protein kinase superfamily. AGC Ser/Thr protein kinase family. GPRK subfamily.,similarity:Contains 1 AGC-kinase C-terminal domain.,similarity:Contains 1 PH domain.,similarity:Contains 1 protein kinase domain.,similarity:Contains 1 RGS domain.,subunit:Interacts with GIT1 (By similarity). Interacts with, and phosphorylates chemokine-stimulated CCR5.,tissue specificity:Expressed in peripheral blood leukocytes.,

Research Area

Chemokine;Endocytosis;

Image Data



Immunohistochemical analysis of paraffin-embedded human small intestinal carcinoma tissue. 1,GRK2 (Phospho-Tyr86) Rabbit Polyclonal Antibody was diluted at 1:200 (4° overnight) . 2, Sodium citrate pH 6.0 was used for antigen retrieval (>98°C,20min) . 3,Secondary antibody was diluted at 1:200