
Product Name: Trk B (phospho Tyr706) Rabbit Polyclonal Antibody**Catalog #: APRab05585**

For research use only.

Summary

Description	Rabbit polyclonal Antibody
Host	Rabbit
Application	WB,IHC,ICC/IF,ELISA
Reactivity	Human,Mouse,Rat
Conjugation	Unconjugated
Modification	Phosphorylated
Isotype	IgG
Clonality	Polyclonal
Form	Liquid
Concentration	1mg/ml
Storage	Aliquot and store at -20°C (valid for 12 months). Avoid freeze/thaw cycles.
Shipping	Ice bags
Buffer	Liquid in PBS containing 50% glycerol, 0.5% protective protein and 0.02% New type preservative N.
Purification	Affinity purification

Application

Dilution Ratio	WB 1:500-1:2000,IHC 1:100-1:300,ICC/IF 1:200-1:1000,ELISA 1:10000-1:20000
Molecular Weight	92kDa

Antigen Information

Gene Name	NTRK2
Alternative Names	NTRK2; TRKB; BDNF/NT-3 growth factors receptor; GP145-TrkB; Trk-B; Neurotrophic tyrosine kinase receptor type 2; TrkB tyrosine kinase; Tropomyosin-related kinase B
Gene ID	4915.0
SwissProt ID	Q16620
Immunogen	The antiserum was produced against synthesized peptide derived from human Trk B around the phosphorylation site of Tyr705. AA range:671-720

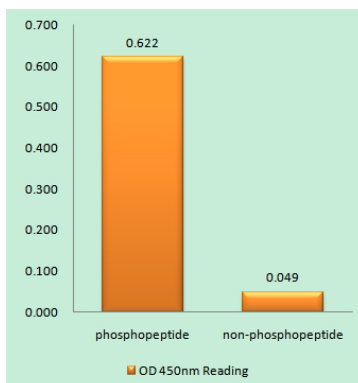
Background

This gene encodes a member of the neurotrophic tyrosine receptor kinase (NTRK) family. This kinase is a membrane-bound receptor that, upon neurotrophin binding, phosphorylates itself and members of the MAPK pathway. Signalling through this kinase leads to cell differentiation. Mutations in this gene have been associated with obesity and mood disorders. Alternative splicing results in multiple transcript variants. [provided by RefSeq, May 2014], alternative products: Additional isoforms seem to exist, catalytic activity: ATP + a [protein]-L-tyrosine = ADP + a [protein]-L-tyrosine phosphate., function: Receptor for brain-derived neurotrophic factor (BDNF), neurotrophin-3 and neurotrophin-4/5 but not nerve growth factor (NGF). Involved in the development and/or maintenance of the nervous system. This is a tyrosine-protein kinase receptor. Known substrates for the TRK receptors are SHC1, PI-3 kinase, and PLC-gamma-1., PTM: Ligand-mediated auto-phosphorylation., similarity: Belongs to the protein kinase superfamily. Tyr protein kinase family., similarity: Belongs to the protein kinase superfamily. Tyr protein kinase family. Insulin receptor subfamily., similarity: Contains 1 protein kinase domain., similarity: Contains 2 Ig-like C2-type (immunoglobulin-like) domains., similarity: Contains 2 LRR (leucine-rich) repeats., subunit: Exists in a dynamic equilibrium between monomeric (low affinity) and dimeric (high affinity) structures. Binds SH2B2. Interacts with SQSTM1 and KIDINS220., tissue specificity: Isoform TrkB is widely expressed, mainly in the nervous tissue. In the CNS, expression is observed in the cerebral cortex, hippocampus, thalamus, choroid plexus, granular layer of the cerebellum, brain stem, and spinal cord. In the peripheral nervous system, it is expressed in many cranial ganglia, the ophthalmic nerve, the vestibular system, multiple facial structures, the submaxillary glands, and dorsal root ganglia. Isoform TrkB-T1 is expressed in multiple tissues, mainly in brain, pancreas, kidney and heart. Isoform TrkB-T-Shc is predominantly expressed in brain.,

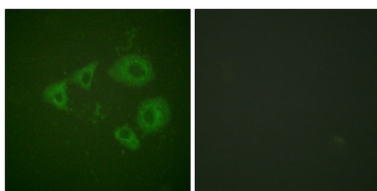
Research Area

MAPK_ERK_Growth;MAPK_G_Protein;Neurotrophin;

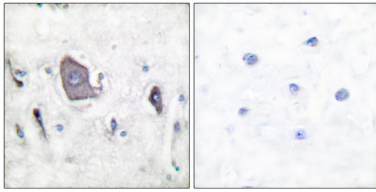
Image Data



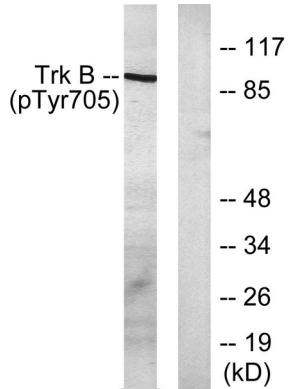
Enzyme-Linked Immunosorbent Assay (Phospho-ELISA) for Immunogen Phosphopeptide (Phospho-left) and Non-Phosphopeptide (Phospho-right) , using Trk B (Phospho-Tyr705) Antibody



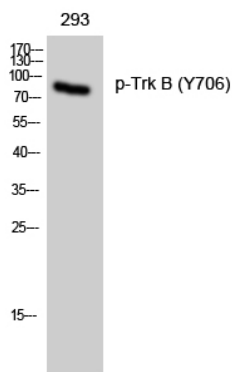
Immunofluorescence analysis of HUVEC cells, using Trk B (Phospho-Tyr705) Antibody. The picture on the right is blocked with the phosphopeptide.



Immunohistochemistry analysis of paraffin-embedded human brain, using Trk B (Phospho-Tyr705) Antibody. The picture on the right is blocked with the phospho peptide.



Western blot analysis of lysates from mouse kidney, using Trk B (Phospho-Tyr705) Antibody. The lane on the right is blocked with the phospho peptide.



Western Blot analysis of 293 cells using Phospho-Trk B (Y706) Polyclonal Antibody diluted at 1: 1000