

---

**Product Name: TPH2 (phospho Ser19) Rabbit Polyclonal Antibody****Catalog #: APRab05574**

For research use only.

**Summary**

<b>Description</b>	Rabbit polyclonal Antibody
<b>Host</b>	Rabbit
<b>Application</b>	WB,ELISA
<b>Reactivity</b>	Human,Mouse,Rat
<b>Conjugation</b>	Unconjugated
<b>Modification</b>	Phosphorylated
<b>Isotype</b>	IgG
<b>Clonality</b>	Polyclonal
<b>Form</b>	Liquid
<b>Concentration</b>	1mg/ml
<b>Storage</b>	Aliquot and store at -20°C (valid for 12 months). Avoid freeze/thaw cycles.
<b>Shipping</b>	Ice bags
<b>Buffer</b>	Liquid in PBS containing 50% glycerol, 0.5% protective protein and 0.02% New type preservative N.
<b>Purification</b>	Affinity purification

**Application**

<b>Dilution Ratio</b>	WB 1:500-1:2000,ELISA 1:20000-1:40000
<b>Molecular Weight</b>	56kDa

**Antigen Information**

<b>Gene Name</b>	TPH2
<b>Alternative Names</b>	TPH2; NTPH; Tryptophan 5-hydroxylase 2; Neuronal tryptophan hydroxylase; Tryptophan 5-monoxygenase 2
<b>Gene ID</b>	121278.0
<b>SwissProt ID</b>	Q8IWU9
<b>Immunogen</b>	Synthesized phospho-peptide around the phosphorylation site of human TPH2 (phospho Ser19)

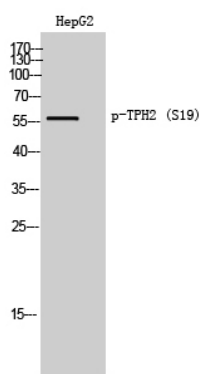
**Background**

This gene encodes a member of the pterin-dependent aromatic acid hydroxylase family. The encoded protein catalyzes the first and rate limiting step in the biosynthesis of serotonin, an important hormone and neurotransmitter. Mutations in this gene may be associated with psychiatric diseases such as bipolar affective disorder and major depression. [provided by RefSeq, Feb 2016],catalytic activity:L-tryptophan + tetrahydrobiopterin + O(2) = 5-hydroxy-L-tryptophan + 4a-hydroxytetrahydrobiopterin.,cofactor:Fe(2+) ion.,disease:Genetic variation in TPH2 may influence susceptibility to major depressive disorder (MDD) [MIM:608516].,pathway:Aromatic compound metabolism; serotonin biosynthesis; serotonin from L-tryptophan: step 1/2.,similarity:Belongs to the biopterin-dependent aromatic amino acid hydroxylase family.,similarity:Contains 1 ACT domain.,tissue specificity:Brain specific.,

## Research Area

Tryptophan metabolism;

## Image Data



Western Blot analysis of HepG2 cells using Phospho-TPH2 (S19) Polyclonal Antibody