

---

**Product Name: TPH1 (phospho Ser260) Rabbit Polyclonal Antibody****Catalog #: APRab05572**

For research use only.

**Summary**

<b>Description</b>	Rabbit polyclonal Antibody
<b>Host</b>	Rabbit
<b>Application</b>	WB,IHC,ICC/IF,ELISA
<b>Reactivity</b>	Human,Mouse,Rat
<b>Conjugation</b>	Unconjugated
<b>Modification</b>	Phosphorylated
<b>Isotype</b>	IgG
<b>Clonality</b>	Polyclonal
<b>Form</b>	Liquid
<b>Concentration</b>	1mg/ml
<b>Storage</b>	Aliquot and store at -20°C (valid for 12 months). Avoid freeze/thaw cycles.
<b>Shipping</b>	Ice bags
<b>Buffer</b>	Liquid in PBS containing 50% glycerol, 0.5% protective protein and 0.02% New type preservative N.
<b>Purification</b>	Affinity purification

**Application**

<b>Dilution Ratio</b>	WB 1:500-1:2000,IHC 1:100-1:300,ICC/IF 1:50-1:200,ELISA 1:5000-1:20000
<b>Molecular Weight</b>	55kDa

**Antigen Information**

<b>Gene Name</b>	TPH1
<b>Alternative Names</b>	TPH1; TPH; TPRH; TRPH; Tryptophan 5-hydroxylase 1; Tryptophan 5-monoxygenase 1
<b>Gene ID</b>	7166.0
<b>SwissProt ID</b>	P17752
<b>Immunogen</b>	The antiserum was produced against synthesized peptide derived from human Tryptophan Hydroxylase around the phosphorylation site of Ser260. AA range:231-280

**Background**

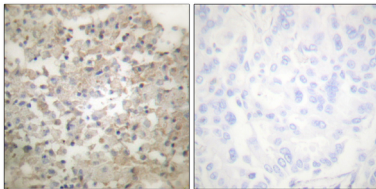
This gene encodes a member of the aromatic amino acid hydroxylase family. The encoded protein catalyzes the first and rate

limiting step in the biosynthesis of serotonin, an important hormone and neurotransmitter. Mutations in this gene have been associated with an elevated risk for a variety of diseases and disorders, including schizophrenia, somatic anxiety, anger-related traits, bipolar disorder, suicidal behavior, addictions, and others.[provided by RefSeq, Apr 2009],catalytic activity:L-tryptophan + tetrahydrobiopterin + O(2) = 5-hydroxy-L-tryptophan + 4a-hydroxytetrahydrobiopterin.,cofactor:Fe(2+) ion.,pathway:Aromatic compound metabolism; serotonin biosynthesis; serotonin from L-tryptophan: step 1/2.,similarity:Belongs to the biopterin-dependent aromatic amino acid hydroxylase family.,similarity:Contains 1 ACT domain.,subunit:Multimer of identical subunits.,tissue specificity:Isoform 2 seems to be less widely expressed than isoform 1.,

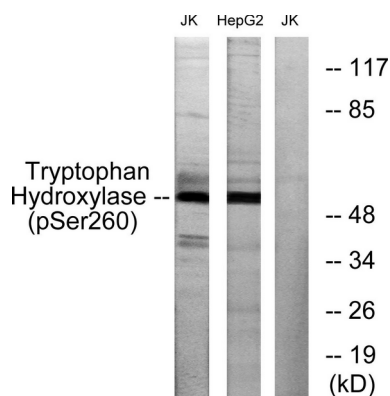
## Research Area

Tryptophan metabolism;

## Image Data



Immunohistochemistry analysis of paraffin-embedded human lung carcinoma, using Tryptophan Hydroxylase (Phospho-Ser260) Antibody. The picture on the right is blocked with the phospho peptide.



Western blot analysis of lysates from Jurkat cells and HepG2 cells, using Tryptophan Hydroxylase (Phospho-Ser260) Antibody. The lane on the right is blocked with the phospho peptide.