

---

**Product Name: TOB1 (phospho Ser164) Rabbit Polyclonal Antibody****Catalog #: APRab05566**

For research use only.

**Summary**

<b>Description</b>	Rabbit polyclonal Antibody
<b>Host</b>	Rabbit
<b>Application</b>	WB,IHC,ICC/IF,ELISA
<b>Reactivity</b>	Human,Mouse,Rat
<b>Conjugation</b>	Unconjugated
<b>Modification</b>	Phosphorylated
<b>Isotype</b>	IgG
<b>Clonality</b>	Polyclonal
<b>Form</b>	Liquid
<b>Concentration</b>	1mg/ml
<b>Storage</b>	Aliquot and store at -20°C (valid for 12 months). Avoid freeze/thaw cycles.
<b>Shipping</b>	Ice bags
<b>Buffer</b>	Liquid in PBS containing 50% glycerol, 0.5% protective protein and 0.02% New type preservative N.
<b>Purification</b>	Affinity purification

**Application**

<b>Dilution Ratio</b>	WB 1:500-1:2000,IHC 1:100-1:300,ICC/IF 1:50-1:200,ELISA 1:5000-1:10000
<b>Molecular Weight</b>	40kDa

**Antigen Information**

<b>Gene Name</b>	TOB1
<b>Alternative Names</b>	TOB1; TOB; TROB1; Protein Tob1; Transducer of erbB-2 1
<b>Gene ID</b>	10140.0
<b>SwissProt ID</b>	P50616
<b>Immunogen</b>	The antiserum was produced against synthesized peptide derived from human TOB1 around the phosphorylation site of Ser164. AA range:130-179

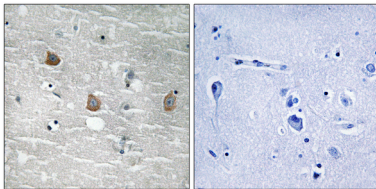
**Background**

This gene encodes a member of the transducer of erbB-2 /B-cell translocation gene protein family. Members of this family are

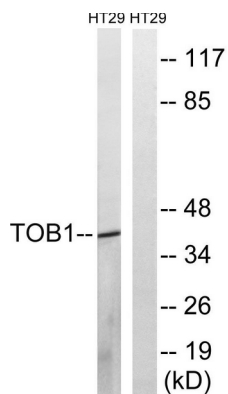
anti-proliferative factors that have the potential to regulate cell growth. The encoded protein may function as a tumor suppressor. Alternate splicing results in multiple transcript variants. [provided by RefSeq, Aug 2011],function:Anti-proliferative protein that interacts with the erbB-2 receptor tyrosine kinase. May physically and/or functionally interact with protein-tyrosine kinase receptors.,PTM:Phosphorylated on Ser and Thr residues.,similarity:Belongs to the BTG family.,subunit:Interacts with CNOT7.,tissue specificity:Ubiquitous.,

## Research Area

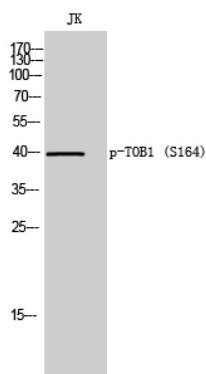
## Image Data



Immunohistochemistry analysis of paraffin-embedded human brain, using TOB1 (Phospho-Ser164) Antibody. The picture on the right is blocked with the phospho peptide.



Western blot analysis of lysates from HT29 cells treated with serum 20% 15', using TOB1 (Phospho-Ser164) Antibody. The lane on the right is blocked with the phospho peptide.



Western Blot analysis of JK cells using Phospho-TOB1 (S164) Polyclonal Antibody