

---

**Product Name: TIS11B (phospho Ser92) Rabbit Polyclonal Antibody****Catalog #: APRab05564**

For research use only.

**Summary**

<b>Description</b>	Rabbit polyclonal Antibody
<b>Host</b>	Rabbit
<b>Application</b>	WB,IHC,ELISA
<b>Reactivity</b>	Human,Mouse,Rat
<b>Conjugation</b>	Unconjugated
<b>Modification</b>	Phosphorylated
<b>Isotype</b>	IgG
<b>Clonality</b>	Polyclonal
<b>Form</b>	Liquid
<b>Concentration</b>	1mg/ml
<b>Storage</b>	Aliquot and store at -20°C (valid for 12 months). Avoid freeze/thaw cycles.
<b>Shipping</b>	Ice bags
<b>Buffer</b>	Liquid in PBS containing 50% glycerol, 0.5% protective protein and 0.02% New type preservative N.
<b>Purification</b>	Affinity purification

**Application**

<b>Dilution Ratio</b>	WB 1:500-1:2000,IHC 1:50-1:300,ELISA 1:2000-1:20000
<b>Molecular Weight</b>	36kDa

**Antigen Information**

<b>Gene Name</b>	ZFP36L1
<b>Alternative Names</b>	ZFP36L1; BERG36; BRF1; ERF1; RNF162B; TIS11B; Zinc finger protein 36; C3H1 type-like 1; Butyrate response factor 1; EGF-response factor 1; ERF-1; Protein TIS11B
<b>Gene ID</b>	677.0
<b>SwissProt ID</b>	Q07352
<b>Immunogen</b>	The antiserum was produced against synthesized peptide derived from human TISB around the phosphorylation site of Ser92. AA range:58-107

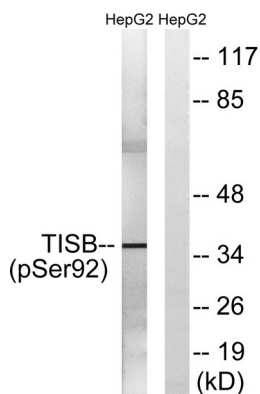
**Background**

This gene is a member of the TIS11 family of early response genes, which are induced by various agonists such as the phorbol ester TPA and the polypeptide mitogen EGF. This gene is well conserved across species and has a promoter that contains motifs seen in other early-response genes. The encoded protein contains a distinguishing putative zinc finger domain with a repeating cys-his motif. This putative nuclear transcription factor most likely functions in regulating the response to growth factors. Alternatively spliced transcript variants encoding different isoforms have been found for this gene. [provided by RefSeq, Sep 2011],function:Probable regulatory protein involved in regulating the response to growth factors.,similarity:Contains 2 C3H1-type zinc fingers.,

## Research Area

Epigenetics and Nuclear Signaling

## Image Data



Western blot analysis of lysates from HepG2 cells, using TISB (Phospho-Ser92) Antibody. The lane on the right is blocked with the phospho peptide.