

Product Name: TH (phospho Ser8) Rabbit Polyclonal Antibody**Catalog #: APRab05554**

For research use only.

Summary

Description	Rabbit polyclonal Antibody
Host	Rabbit
Application	WB,IHC,ICC/IF,ELISA
Reactivity	Rat
Conjugation	Unconjugated
Modification	Phosphorylated
Isotype	IgG
Clonality	Polyclonal
Form	Liquid
Concentration	1mg/ml
Storage	Aliquot and store at -20°C (valid for 12 months). Avoid freeze/thaw cycles.
Shipping	Ice bags
Buffer	Liquid in PBS containing 50% glycerol, 0.5% protective protein and 0.02% New type preservative N.
Purification	Affinity purification

Application

Dilution Ratio	WB 1:500-1:2000,IHC 1:100-1:300,ICC/IF 1:50-1:200,ELISA 1:5000-1:10000
Molecular Weight	62kDa

Antigen Information

Gene Name	TH
Alternative Names	TH; TYH; Tyrosine 3-monooxygenase; Tyrosine 3-hydroxylase; TH
Gene ID	25085.0
SwissProt ID	P04177
Immunogen	The antiserum was produced against synthesized peptide derived from mouse Tyrosine Hydroxylase around the phosphorylation site of Ser8. AA range:2-51

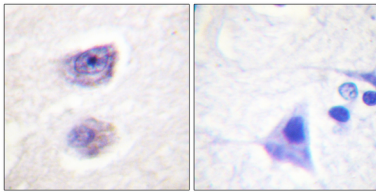
Background

The tyrosine hydroxylase encoded by TH is involved in the conversion of tyrosine to dopamine. It is the rate-limiting enzyme in

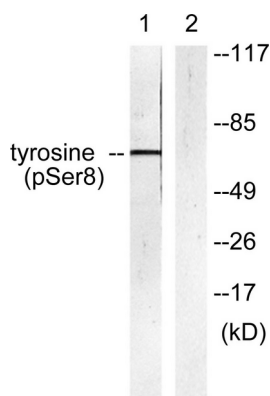
the synthesis of catecholamines, hence plays a key role in the physiology of adrenergic neurons. Mutations in this gene have been associated with autosomal recessive Segawa syndrome. Alternatively spliced transcript variants encoding different isoforms have been noted for this gene.

Research Area

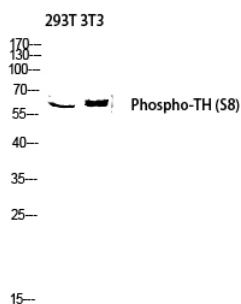
Image Data



Immunohistochemistry analysis of paraffin-embedded human brain, using Tyrosine Hydroxylase (Phospho-Ser8) Antibody. The picture on the right is blocked with the phospho peptide.



Western blot analysis of lysates from HepG2 cells treated with Anisomycin 25ug/ml 30', using Tyrosine Hydroxylase (Phospho-Ser8) Antibody. The lane on the right is blocked with the phospho peptide.



Western blot analysis of 293T 3T3 lysis using Phospho-TH (S8) antibody. Antibody was diluted at 1:1000